

VILLAGE OF FOX CROSSING

Community Profile

Source: U.S. Census Bureau

POPULATION

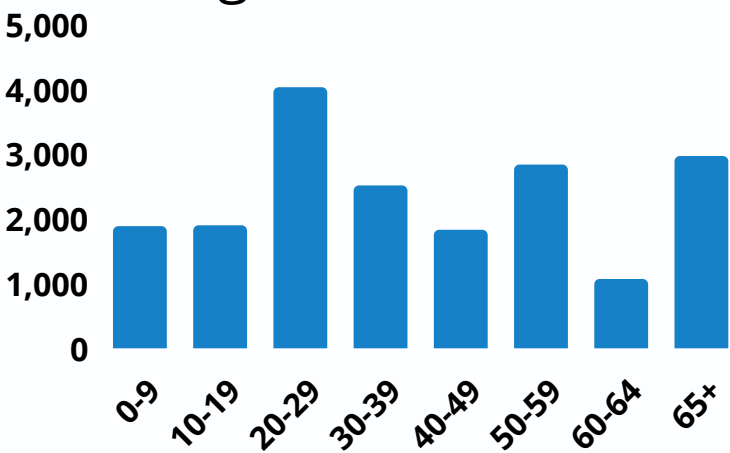
Total population:

19,239

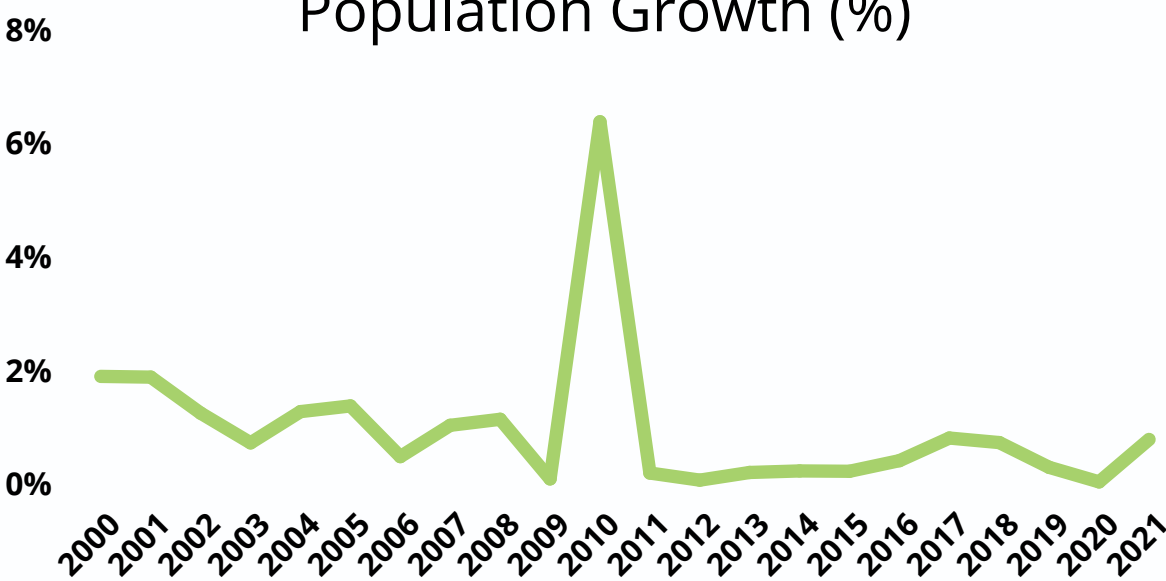
Median Age:

37

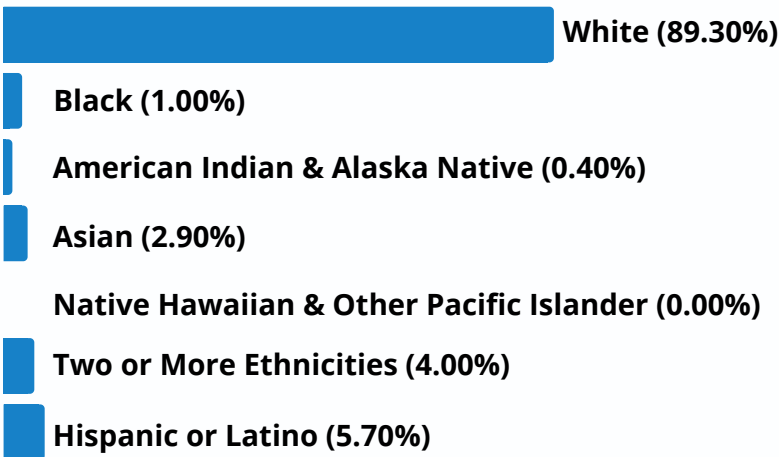
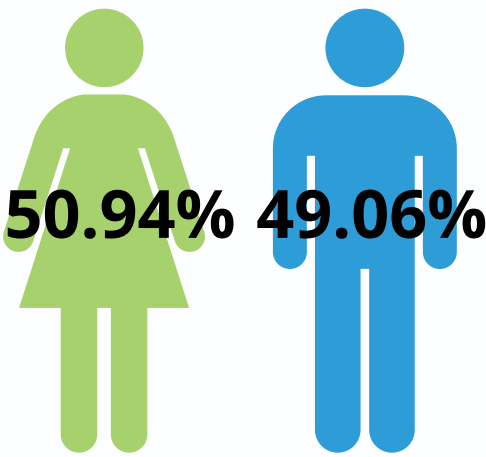
Age Distribution



Population Growth (%)



Race



HOUSING

Total households:

8,843

Persons/Household:

2.14

Households that are families:

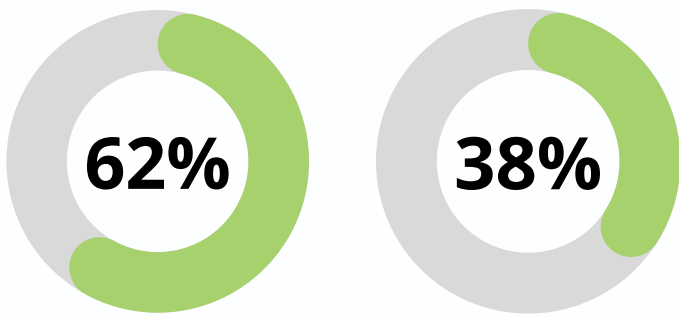
51.2%

Median home value:

\$165,300

Median gross rent:

\$837



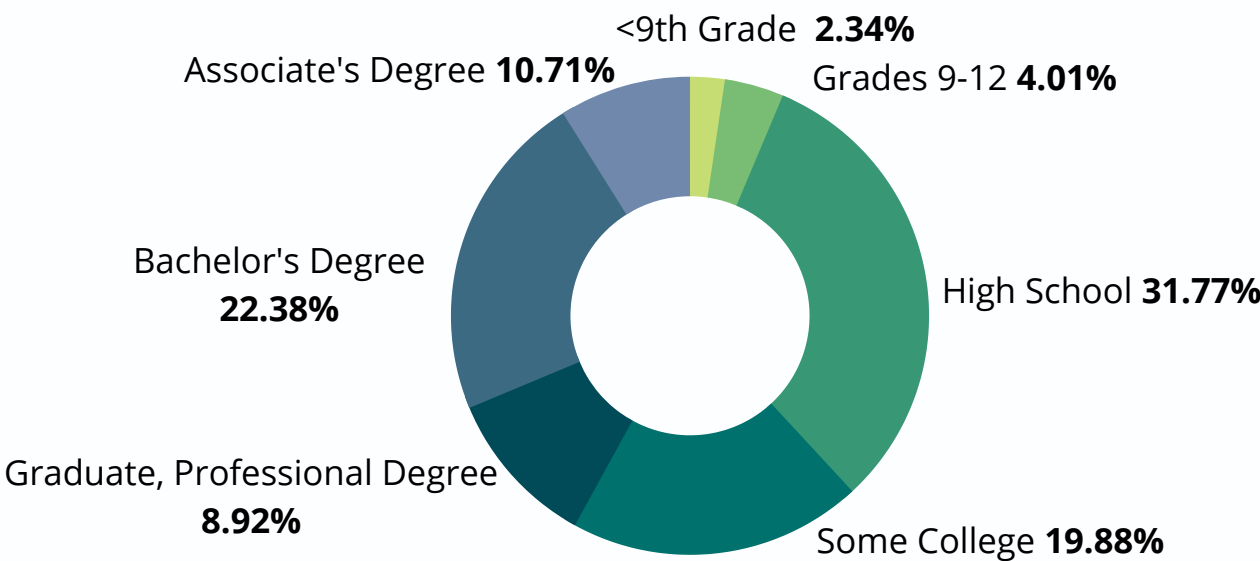
Owner-Occupied

Renter-Occupied

9,171 Total Housing Units



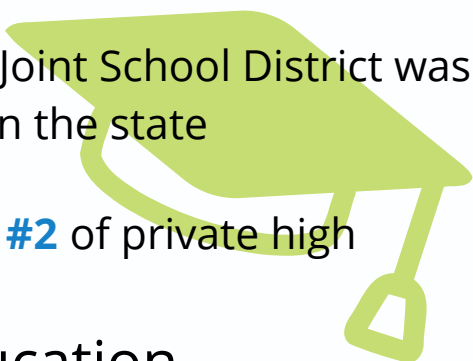
EDUCATIONAL ATTAINMENT



EDUCATION

-According to Niche, in 2022, the Neenah Joint School District was ranked as one of the top school districts in the state

-St. Mary's Catholic High School is ranked #2 of private high schools in the area



Post Secondary Education

Lawrence University (Appleton, WI)
1,473 undergraduates
Top programs include: Psychology, Economics, Music Performance, Biology, & English Language & Literature
15 minutes

Fox Valley Technical College (Appleton, WI)
6,029 undergraduates
Top programs include: Business Administration & Management, Welding, Criminal Justice, Nursing, & Interior Design
11 minutes

UW Oshkosh at Fox Cities (Menasha, WI)
1,814 undergraduates
Top 5 transfer majors: Business, Biological Sciences, Health Care, Engineering, & Education
9 minutes

University of Wisconsin-Oshkosh (Oshkosh, WI)
9,147 undergraduates
Top programs include: Nursing, Biology, Education, Human Services, Psychology, Kinesiology, & Finance
19 minutes

St. Norbert's College (De Pere, WI)
1,859 undergraduates
Top programs include: Business, Biology, Psychology, Mass Communication/Media Studies, Education, Finance, & Speech Communication
30 minutes

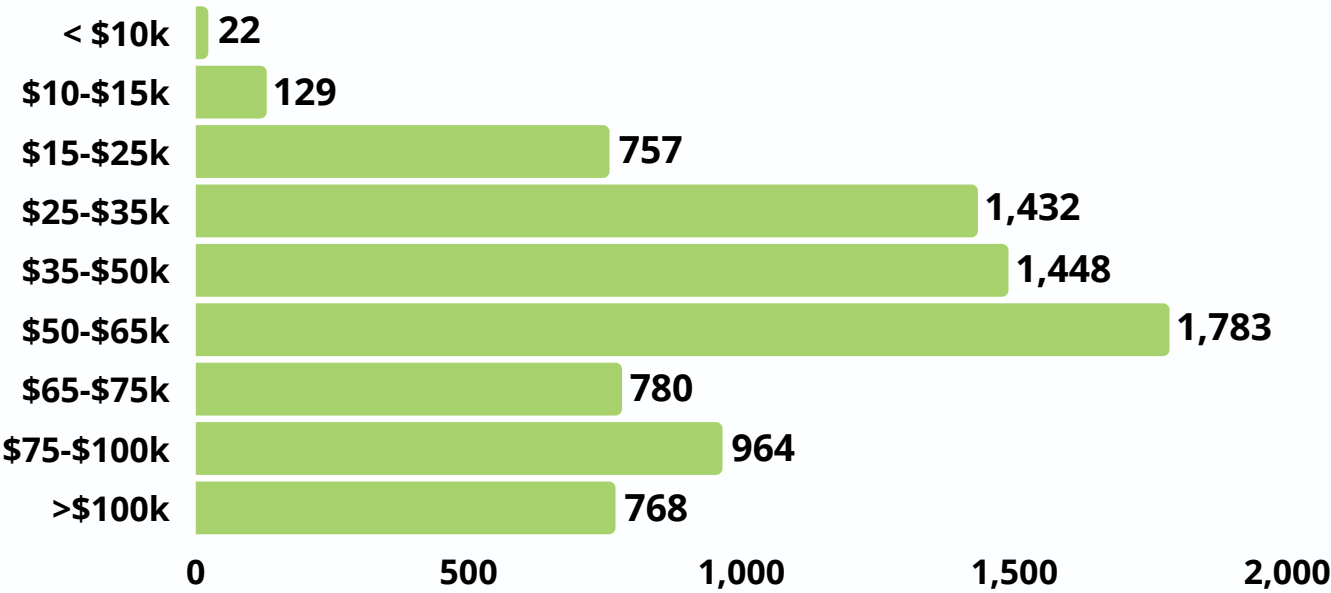
University of Wisconsin-Green Bay (Green Bay, WI)
6,657 undergraduates
Top programs include: Business, Psychology, Nursing, Education, Behavioral Sciences, Computer Science, & History
42 minutes

INCOME & SPENDING

	2010 Per Capita Personal Income*	2020 Per Capita Personal Income*
Village of Fox Crossing:	\$29,548	\$42,354
Neenah-Oshkosh MSA:	\$26,383	\$33,420
Winnebago County:	\$26,383	\$33,101
State of Wisconsin:	\$26,624	\$34,450

\$61,875
Median Household Income

Household Income Distribution



Tax Rate By School District (TID IN)

SCHOOL DISTRICT:	Tax Levy per \$1,000 of Assessed Value					
	3892 NEENAH*		3430 MENASHA		0147 APPLETON	
TAX ENTITY:	2020	2021	2020	2021	2020	2021
Local School Tax	\$7.836406	\$7.457773	\$11.534476	\$11.678708	\$7.954160	\$7.887246
Vocational School Tax	\$0.993291	\$0.899808	\$0.993291	\$0.899808	\$0.993291	\$0.899808
County Tax	\$5.153302	\$4.844412	\$5.153302	\$4.844412	\$5.153302	\$4.844412
State Tax	\$0.000000	\$0.000000	\$0.000000	\$0.000000	\$0.000000	\$0.000000
Village Tax	\$5.009072	\$4.940578	\$5.009072	\$4.940578	\$5.009072	\$4.940578
GROSS TAX RATE	\$18.992071	\$18.142571	\$22.690141	\$22.363506	\$19.109825	\$18.572044
State School Credit	(\$1.321711)	(\$1.307375)	(\$1.321711)	(\$1.307375)	(\$1.321711)	(\$1.307375)
NET TAX RATE	\$17.670360	\$16.835196	\$21.368430	\$21.056131	\$17.788114	\$17.264669
Lottery Credit	\$136.42	\$199.30	\$200.80	\$310.80	\$138.47	\$203.65
First Dollar Credit	\$55.67	\$56.19	\$81.94	\$87.63	\$56.50	\$57.42
Refuse Pick Up Charge	\$190.00	\$190.00	\$190.00	\$190.00	\$190.00	\$190.00
ASSESSMENT RATIO 2021	100.3430816%					
FOX CROSSING EQUALIZED RATE				\$4.96		

*Note: 2021 Neenah School District Levy increased for Referendum by \$1.39/\$1,000 Assessed Value

LABOR FORCE	
Population 16 and older: 16,063	Population in labor force: 11,107
Population employed: 10,840	Population unemployed: 267

EMPLOYMENT BY SECTOR			
	2020 Employment	% Industry	Average Wages
Agriculture, Forestry, & Fishing & Hunting	64	0.5%	\$15,682
Construction	540	4.98%	\$37,100
Manufacturing	2,724	25.1%	\$53,553
Wholesale Trade	274	2.53%	\$26,280
Retail Trade	1,344	12.39%	\$18,739
Transportation & Warehousing	407	3.75%	\$34,789
Information	194	1.8%	\$37,692
Finance & Insurance	1,080	9.96%	\$52,031
Professional, Scientific, & Management Services	934	8.6%	\$32,414
Education, Health Care, & Social Assistance	1,838	16.95%	\$31,453
Arts, Entertainment, Recreation, & Food Services	561	5.2%	\$19,243
Other services, except public administration	404	3.77%	\$33,860
Public Administration	476	4.39%	\$56,080

MAJOR EMPLOYERS	
<div>Kimberly-Clark Corporation (Consumer Paper Products)</div> <div>3,200 employees</div> <div>  </div>	<div>  </div>
<div>  </div> <div>SECURA Insurance (Insurance)</div> <div>1,152 employees</div> <div>  </div>	<div> <div>Pierce Manufacturing (Fire Truck Manufacturing)</div> <div>1,500 employees</div> </div> <div>  </div>
<div>  </div>	<div> <div>Neenah Paper Co (Quality Bond, Text, Cover, & Recycled Papers)</div> <div>500 employees</div> </div>

UTILITIES

RESIDENTIAL VOLUME CHARGES:	
First 6,000 gallons	\$ 4.57 per 1,000 gallons
Next 10,000 gallons	\$ 5.10 per 1,000 gallons
Over 16,000 gallons	\$ 5.60 per 1,000 gallons
NON RESIDENTIAL VOLUME CHARGES:	
First 48,000 gallons	\$ 4.57 per 1,000 gallons
Next 651,000 gallons	\$ 4.49 per 1,000 gallons
Over 699,000 gallons	\$ 4.22 per 1,000 gallons
SEWER VOLUME CHARGES:	
Volume Charges	\$ 4.92 per 1,000 gallons
Lateral Repair Fund	\$ 0.35 per 1,000 gallons



HEALTH SERVICES

ASCENSION NE WISCONSIN - ST. ELIZABETH CAMPUS

-One of the nation's top 64 health based facilities on clinical performance according to Thomson Reuters, a leading provider of information and solutions to improve the cost and quality of healthcare.

THEDACARE

-ThedaCare Regional Medical Center-Neenah has been nationally recognized as one of the top 5% as a top performer in large, specialized, complex care centers in 2021 Bernard A. Birnbaum, MD, Quality Leadership Award Ranking by Vizient Inc.

CHILDREN'S HOSPITAL OF WISCONSIN

-2022-2023; Ranked among the Nation's Best by U.S. News & World Report in 8 categories (cancer, cardiology & heart surgery, diabetes, gastroenterology, nephrology, neurology & neurosurgery, pulmonology, and urology)

TRANSPORTATION

HIGHWAY

Two U.S. Highways intersect within the Village of Fox Crossing, providing access. U.S. Highway 10 runs East/West, and U.S. Highway 41 runs North/South.

AIRLINE

The Appleton International Airport is the 3rd largest airport in Wisconsin. Four major airlines (American Airlines, Delta, Allegiant, and United Airlines) with nonstop service to 15 destinations.

TRANSIT

Fox Valley Transit provides safe and reliable public transportation to many communities that comprise the Fox Cities.

RAIL

Service is provided by the Canadian National, which is located near several industrial sites, many of which have spurs serving the sites.

RECREATION

20

miles of recreational trails

21

community &
neighborhood parks

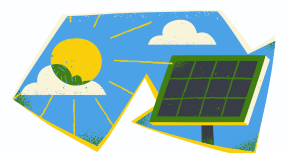
261+

acres to relax & enjoy the outdoors with friends & family!

For more information, visit: www.foxcrossingwi.gov/departments/parks-and-recreation/



SUSTAINABILITY



Backyard Chickens & Urban Beekeeping Ordinances

Expanding the presence of solar for our businesses to residential households!

Community Gardens located at Schildt & Wittmann Parks

The Village has collected 14,209 pounds of plastic film recycling

Two Electronics Recycling Events each year (Fall & Spring)

LED street light conversion project

Storm water education & outreach

NO MOW MAY to encourage natural lawns & protect pollinators

CONTACT

Community Development Department

Village of Fox Crossing

2000 Municipal Drive

Neenah, WI 54956

(920) 720-7105

Fax: (920) 720-7116

www.foxcrossingwi.gov/

comdev@foxcrossingwi.gov



FOX CROSSING
BRIDGING THE FOX CITIES