

Conceptual Master Plan for Woodland Prairie Park



March 2019

Approved by the Village of Fox Crossing Park Commission on May 08, 2019

Adopted by the Village of Fox Crossing Board of Trustees on June 24, 2019

WOODLAND PRAIRIE PARK CONCEPTUAL MASTER PLAN

- Acknowledgements 5
- Section 1: Executive Summary 7
- Section 2: Guiding Principles 8
- Section 3: Woodland Prairie Park Master Plan 10
- Section 4: Development Zones 13
- Section 5: Systems Diagrams
 - 5.1 Vegetation 15
 - 5.2 Vehicle + Circulation 17
 - 5.3 Trail Network + Adrenaline Areas 19
 - 5.4 Community Buildings, Spaces + Events 21
 - 5.5 Playgrounds 23
 - 5.6 Sustainable Design 25
 - 5.7 Winter Activity 27
- Section 6: Implementation Strategy
 - 6.1 Phasing and Estimated Costs 29
 - 6.2 Grant Funding Opportunities 30
 - 6.3 Let's Get Started! 31
- Section 7 Appendix Index 33

Acknowledgements

Village of Fox Crossing Park and Recreation Commission

Paul Vandenberg, Chairperson
Rhonda Elliot
Steve Otto
Jason Patzwald
Clarence Peterson
Kathy Sylvester
Jim Wise

Village of Fox Crossing Staff

Amanda Geiser, Director, Parks and Recreation Department
Jeff Sturgell, Village Manager
George Dearborn, Community Development Director
Ria Hull, Village Planner
Randy Gallow, Street Superintendent

Village of Fox Crossing Board of Trustees

Dale Youngquist, Village Board President
Michael Van Dyke
Kris Koppe
Gregory Ziegler
Dale McNamee
Mark Englebert
Barbara Hanson

Consultant Team

Short Elliott Hendrickson Inc (SEH)

Thank You!

We want to thank the Village Staff, Parks and Recreation Commission, and citizens of Fox Crossing for their participation, enthusiasm and valuable input throughout the projects planning process.

Prepared by



Short Elliott Hendrickson
6808 Odana Road, Suite 200
Madison, WI 53719



Birds Eye Perspective looking toward northeast from the intersection of County Highway CB and Shady Lane

Section 1: Executive Summary

Located at the intersection of County Highway CB and Shady Lane, Woodland Prairie Park sits on a 64 acre parcel of land. The current land use is a mix of Village maintenance and storage facilities, a municipal tree farm, leased agricultural lands, remnant woodland, and scrub woodland. The Woodland Prairie Park Conceptual Master plan establishes a long-term vision for transforming the current site into a destination for the adjacent neighborhoods, the Fox Crossing community, and the greater Fox Valley population.

The vision is to create a neighborhood and destination park for Fox Crossing residents; a park that enhances the identity of Fox Crossing. The park will be a treasured local asset, well connected to the surrounding neighborhoods and providing unique, enriching experiences for all of Fox Crossing's residents.

As the Village and its partners work collaboratively to implement the Master Plan, decisions will be guided by the following set of **guiding principles**:

- The park should be **unique**, providing opportunities which are not found elsewhere in the Village
- The park should **preserve significant natural resources** and features
- The park should **function as both a neighborhood park, community park, and destination park** to bring people to the Village
- Park programming should be done with **respect to neighbors**, including noise, safety, and other concerns
- The park should **establish a strong identity** for the Village
- The park should be **multi-functional**, providing a broad range of activities and programs to meet the needs of the entire community
- The park should **accommodate community events** and gatherings
- There should be **good trail access** to the park from multiple directions and throughout the park
- The park should **become a destination**, attracting families to the area
- The park should include a **community building** or pavillion
- The park should incorporate **sustainable design features** including renewable energy

The conceptual master plan preserves the existing remnant woodland, converts agricultural lands to prairie and woodland restoration areas, and enhances the tree farms and marginal woodlands with complimentary uses. Generally the park can be identified by five distinct areas: the County Highway CB/Shady Lane corner gateway, the tree farms, the prairie restoration area, the remnant woodland, and the active woodland.

Planned amenities are intended to attract a representative cross section of the Village of Fox Crossing community. Included will be a network of paved and gravel trails through varying habitats, a community building, community events stage and lawn, sledding hill, traditional playgrounds and fitness stations, nature playgrounds, splash pad, plazas, small gathering areas, picnicing facilities, adventure ropes course, mountain biking trails and skills area/pump track.

A community building and adjacent splashpad, playground, fitness stations, and vegetation will welcome visitors at the corner of CB and Shady, serving as a welcoming gateway to the greater park area. The community building will provide rentable event space, classrooms, serving kitchen, office and storage space, public restrooms, and covered picnic areas, incorporating accessibility and sustainability.

A narrow two-lane parkway will provide access through the central spine of the park, connecting Shady Lane with the newly constructed roundabout at the northern park boundary and entrance to the Secura Insurance campus parking lots to the east of CB.

A network of paved multiuse trails, gravel walking trails, and offroad bike trails will provide further pedestrian access throughout the site. A pedestrian overpass at busy County Highway CB will provide safe access from the CB trail, through the park to existing neighborhoods to the east and south.

Section 2: Guiding Principles

The park should be unique, providing opportunities which are not found elsewhere in the Village

The parks of Fox Crossing provide an abundance of recreational choices, from athletic facilities to disc golf, to fishing and boating. Woodland Prairie Park will provide unique opportunities by embracing the natural resources and features of the 64 acre site.

The park should preserve significant natural resources and features

The remnant woodland in the northeast of the park is a unique blend of northern and southern mesic forests, containing specimens from 150 to 300 years old. Thoughtful park development should preserve this rare gem of woodland habitat. Efforts should be made to enhance the existing stands of trees elsewhere on site - from the tree farm stands to the lesser quality woods. Opportunities for habitat enhancements include removing invasive species from existing woodlands, and creating a prairie habitat from the agricultural fields.

The park should function as both a neighborhood park, community park, and destination park to bring people to Fox Crossing

The park should serve the many neighborhoods within a one to two mile radius. As a 64 acre park, there will be adequate space to address the broad base community-wide park needs. There is opportunity for creating a variety of community gathering spaces along with preserving areas for passive recreational use.

Park programming should be done with respect to neighbors, including noise, safety, and other concerns

Out of consideration for the neighbors, special care should be given to the design and programming of the park to reduce possible noise and safety concerns.

The park should establish a strong identity for the Village

The park is located at the intersection of County Highway CB and Shady Lane, across the highway from the existing Village Complex. This prominent location lends the park and Village Complex to function like a downtown; a collection of buildings and spaces that draws the community together for events, celebrations, and everyday life. Architectural elements and landscape treatments at the prominent corner have the potential to further enhance the Village identity.





The park should be multi-functional, providing a broad range of activities and programs to meet the needs of the entire community

With 64 acres, the park has plenty of room to accommodate a mix of passive and active recreation types with little conflict between user groups.

The park should accommodate community events and gatherings

Events such as Community Safety Night, hosted in June, could be relocated to the park. Concerts in the Park and Movies in the Park could be scheduled throughout the warmer months. A community candlelight ski/snowshoe could be hosted in the winter. The Parks and Recreation Department programming could utilize the community building and entire park for events, classes, and sports clinics.



There should be good trail access to and throughout the park from multiple directions

Trail connections should be made to adjacent neighborhoods, to the Village Complex, and to the existing network of local and regional trails. Signalized crossings should be incorporated at intersection of CB and Shady Lane.



The park should become a destination, attracting families and all user groups to the area

The amenities included in the buildout of the master plan should cater to a broad demographic; events, activities, and amenities should be accessible to all

The park should include a community building or pavillion

A new community building can serve as a central place for the Village of Fox Crossing, drawing the community together for celebrations, events, and community education.

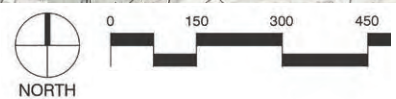


The park should incorporate sustainable design features including renewable energy

The improvements at Woodland Prairie Park should be a model of sustainable improvements throughout the Village and greater Fox Valley Area. Buildings should be LEED certified, and the site development should be SITES certified. Stormwater collection and treatment should be incorporated near all impervious surfaces. Lighting fixtures should be energy efficient and should preserve dark skies. The potential for wind and solar energy production should be studied in the implementation of the master plan.



Figure 3.1: Conceptual Master Plan



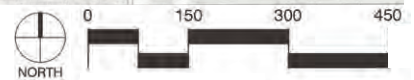
Section 3: Woodland Prairie Park Conceptual Master Plan

Keyed Elements of the Master Plan

- 1 PARKWAY**
 - entrances off Shady Lane and CTH CB roundabout
 - meandering drive stays out of key habitat
 - provides access for:
 - * safety and security patrol
 - * entire community to enjoy the park by car
 - * maintenance
- 2 PARKING LOTS**
 - distributed throughout the park along the parkway
 - utilize stormwater treatment swales where possible
- 3 SIDEWALK**
 - concrete for primary pedestrian access
- 4 PEDESTRIAN CONNECTION TO NEIGHBORHOOD**
- 5 TRAIL**
 - secondary pedestrian access throughout park
 - crushed limestone fines
- 6 COMMUNITY BUILDING**
 - public restrooms
 - rentable event space/warming hut
 - classrooms
 - roof mounted solar array
- 7 SPLASH PAD**
 - incorporate into community building plaza space
 - no above ground elements allows for more flexible space
- 8 PLAYGROUND**
 - incorporate tall play towers for presence from CB and Shady Lane
 - swings
- 9 FITNESS STATIONS**
 - workout area
- 10 WALKING / SKATING LOOP**
 - concrete loop sidewalk around playground could be converted to a skating ribbon in the winter
- 11 STORMWATER SWALE / RAINGARDEN**
 - treat runoff with plantings
- 12 EXISTING SPRUCE PLANTATION**
 - preserve existing trees, limb up for access
 - carve nature playgrounds, paths, and music areas into tree stand
- 13 SMALL EVENT SPACE**
 - selectively clear some of the existing grid of deciduous trees to create small event space
- 14 SLOPED LAWN**
 - accommodate safety night or similar community event
 - event lawn: theater in the park, jazz in the park, opera in the park
 - sledding
- 15 STAGE**
 - flexible design to accommodate small events and large events
- 16 HEAD IN PARKING**
 - closed during events for vendor area, tents, and/or dance floor
 - permeable paving
- 17 SAVANNA GATHERING AREA**
 - oak savanna grove with gathering area and shelter
- 18 CB OVERPASS**
 - pedestrian and bike overpass bridge linking the CB trail with park and neighborhoods to east
- 19 MOUNTAIN BIKING TRAILS**
 - single track mountain bike trail network through existing scrub woodland
- 20 MOUNTAIN BIKE SKILLS AREA / PUMP TRACK**
- 21 TRAILHEAD SHELTER**
- 22 WOODLAND RESTORATION AREA**
- 23 PRAIRIE RESTORATION AREA**
- 24 EXISTING WOODLAND** - to be preserved and maintained
- 25 EXISTING RADIO TOWER**
- 26 ROPES COURSE**



Figure 4.1 : Development Zones



Section 4: Development Zones

Corner Gateway : County Highway CB + Shady Lane

Improvements include:

- Community Building
- Plaza
- Playground
- Fitness Equipment
- Splash Pad
- Parking
- Green Infrastructure
- Trail and Vehicle Access

Tree Farms

Improvements include:

- Nature Playground
- Small Event Space in Black Walnut Grove
- Stage
- Parking

Prairie Restoration

Improvements include:

- Prairie restoration
- Woodland property line buffer
- Sloped Event Lawn
- Trail network through prairie
- Prairie gathering area and shelter

Remnant Woodland

Improvements include:

- Improved trail system
- Preservation of existing woodlands
- Removal of invasive species
- Small gathering areas

Active Woodland

Improvements include:

- Pedestrian bridge connection to CB trail
- Mountain bike trail network and skills area
- Ropes course
- Removal of invasive species

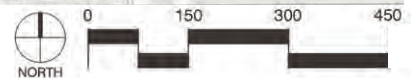
North Entry

Improvements include:

- Parkway connection to roundabout
- Prairie restoration
- Woodland property line buffer



Figure 5.1 : Vegetation



Section 5: Systems Diagrams

The following pages break the park into a series of systems.

5.1 - Vegetation

Prairie Restoration

Convert agricultural fields to prairie and savanna, providing a network of paved and soft trails (gravel or wood chips) for access, enjoyment, and maintenance of the prairie.

Small gathering places could be incorporated along trail intersections, providing a respite, educational signage, and quiet observation areas for trail users.

Woodland Restoration

New woodlands are incorporated as buffers between the park and the highway and adjacent undeveloped lands to the east. This will provide visual buffering, as well as some noise mitigation from the road and from the park to residential neighbors.

Species selection should reflect existing woodlands on site and may include red oak, sugar maple, beech, basswood, black cherry and hickory.

Preserve and Maintain Existing Woodland

Stands of existing woodlands should be kept clear of invasive plant materials such as buckthorn, honeysuckle, and garlic mustard. An additional trail is incorporated into the high quality remnant woodlands; designed to provide access for enjoyment as well as ongoing maintenance of the woodland.

Small gathering places are incorporated at major trail intersections and in unique landforms, such as the natural kettle in the remnant woodlands.

A trail and small clearings in the spruce plantation will incorporate opportunities for natural playgrounds, sculpture, and music play areas.

Stormwater Facility

Stormwater facilities such as bio-swales, infiltration basins, and rain gardens should be incorporated through the park, especially in areas with larger impervious surfaces, such as parking areas, the parkway, and the community building. These facilities will be functional as well as educational, serving as best management practices examples for the community.

Open Lawn

Open lawn within the park is limited to the stage area where a portion of the black walnut grove will be cleared, as well as the sloped lawn to the east of the stage.



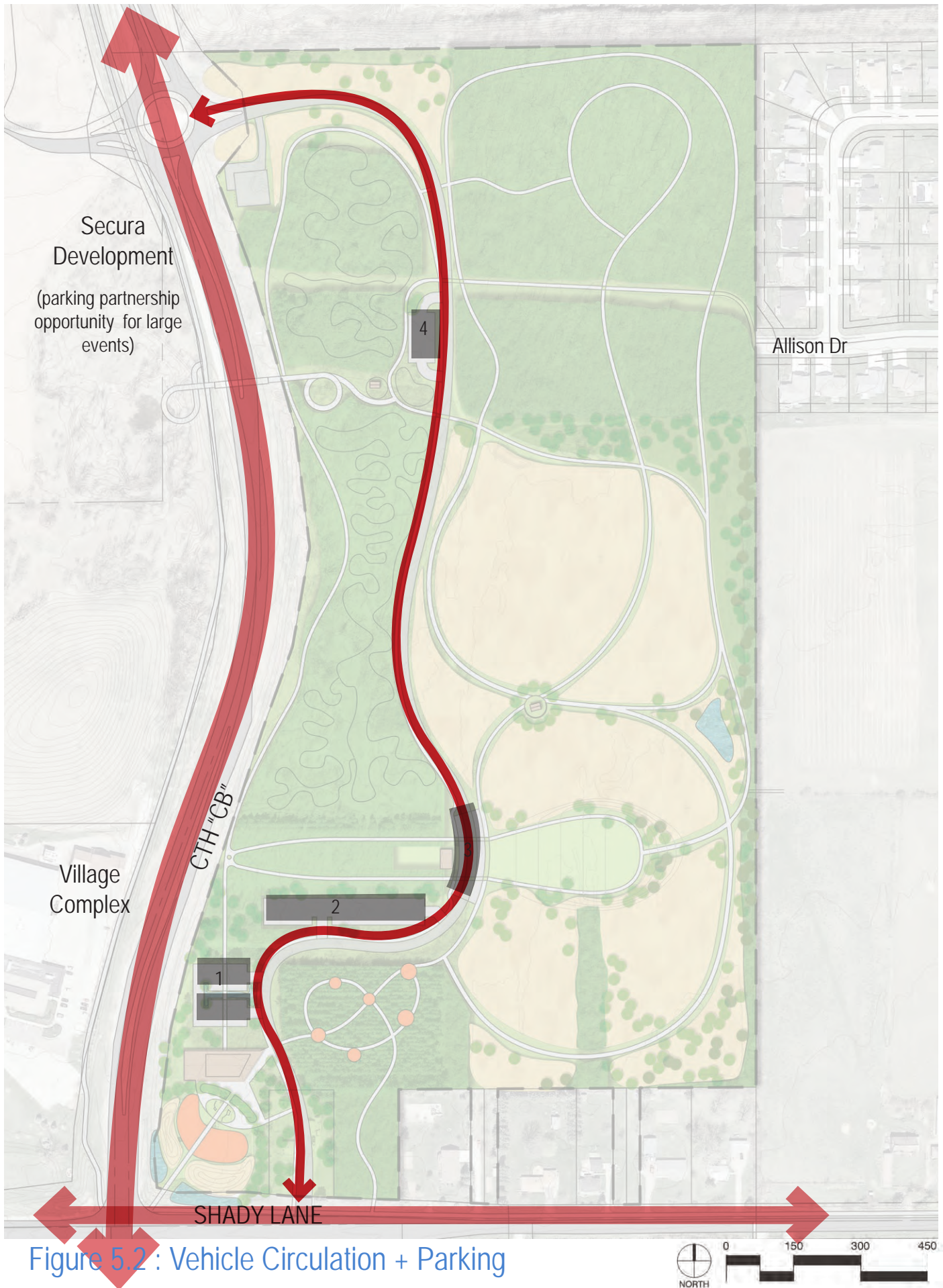


Figure 5.2 : Vehicle Circulation + Parking

5.2 - Vehicle Circulation + Parking

Parkway

A narrow two lane parkway will meander through the park, providing access through the core of the park for park users, maintenance crews, as well as safety and security professionals.

The parkway should be planned to include an adjacent multiuse trail for pedestrians and bicyclists.

Streets

County Highway CB and Shady Lane form the western and southern borders of Woodland Prairie Park. Vehicle access points should be located at the north of the park, tied into the newly constructed roundabout. The connection point at the south along Shady Lane should be east of the existing maintenance yard entrance to increase stacking distances at the intersection of Shady and CB.

Parking Lots

Parking lots should be composed of a pervious surface such as pervious asphalt or pervious pavers, reducing the amount of runoff. Bioswales should be incorporated into parking islands and medians to improve runoff water quality and infiltrate the water where possible.

Street lighting fixtures will be limited to the parking lots, and will comply with dark sky standards.

Larger parking lots will be included at the southern portion of the park to serve the community building and stage area. Parking lot 1 will always be available to easy access to the community center, playground and splash pad users. During community concert events the parkway should be closed from parking lot 2 to parking lot 4, limiting vehicular access to the front of the stage. Parking lot 3 could then be used for vendor setup, and a dance area.

The Parks Department should look at developing an agreement with Secura Insurance to use their parking lot during larger community events.



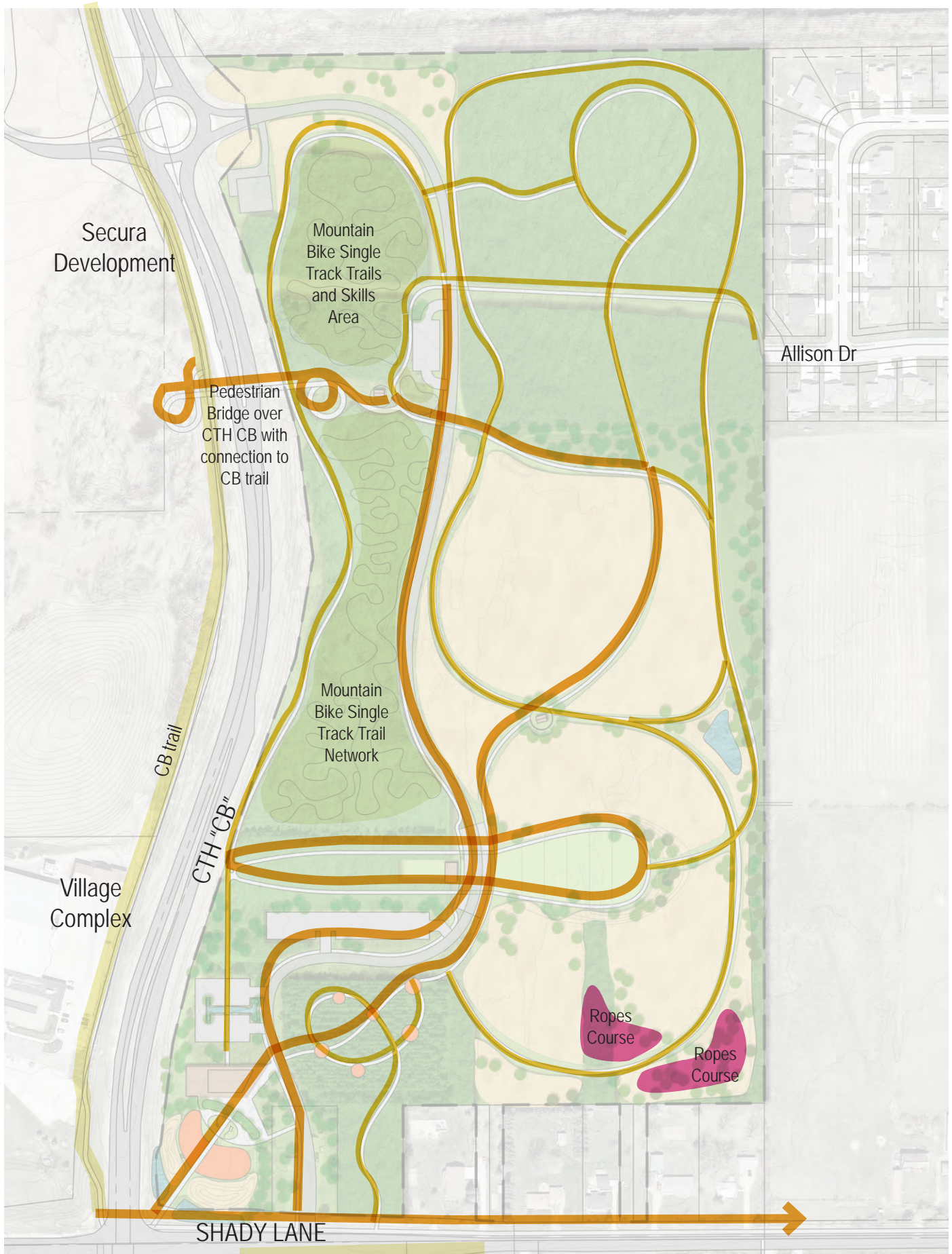


Figure 5.3 : Trail Network + Adrenaline Areas



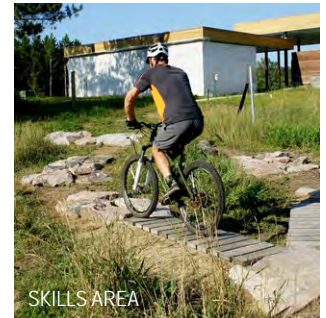
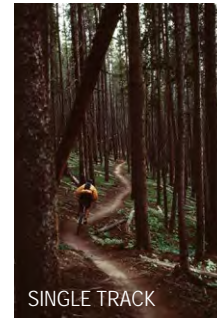
5.3 - Trail Network + "Adrenaline" Areas

Multiuse Trail

A series of multiuse trails and paved pedestrian trails will provide access throughout the park and make connections to adjacent neighborhoods, and trails.

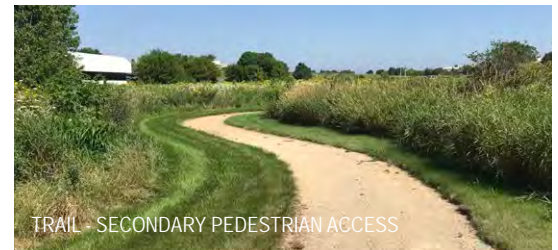
As Shady Lane is improved in the future, a sidewalk or trail should be incorporated on the north side of the street to make the final connection between the trail network to the east, to the park, and to the CB trail.

A **pedestrian bridge** should be incorporated to the south of the roundabout. The bridge will create an elevated pedestrian crossing between the CB trail and the park, eliminating conflicts between vehicles and pedestrians and bicyclists. The bridge offers an opportunity to provide additional community identity through railing mounted signage, and will serve as a gateway to the Village for visitors and residents traveling from the north.



Soft Paths

Gravel and/or mulched trails form the secondary trail network throughout the park, providing a more rustic and natural connection with the park areas.



Mountain Bike Trails and Skills Area (Adrenaline Area*)

The woods adjacent to CB will be developed into a mountain bike trail network, transforming a woodland riddled with concrete rubble into an interesting mountain bike environment. A 3' wide single track trail would be incorporated into the woods. A partnership with local mountain biking groups should be fostered to encourage the proper development and upkeep of the bike trail network.

A mountain bike skills area and pump track will be incorporated near the intersection of the pedestrian bridge offramp and the parkway and the northern parking area.



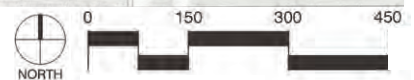
Ropes Course (Adrenaline Area*)

A ropes course at the southeast portion of the site will provide the opportunity for adrenaline seeking park users to challenge themselves. The ropes course would be partially built into existing trees and partially be free standing.

* For the purpose of this report, we are defining "adrenaline areas" as areas designed for adrenaline seeking park users.



Figure 5.4 : Community Buildings, Spaces + Events



5.4 - Community Buildings, Spaces + Events

Buildings / Structures

The **Community Building** will serve as a community gathering space, offering classrooms, event rental space, picnic shelters, public restrooms, serving kitchen, and storage space, and will feature sustainable practices such as being LEED certified, a roof mounted solar array, and stormwater storage and treatment areas.

The proposed **Stage** structure is intended to be two sided. For smaller music events, such as a lunchtime music series, the stage could be set to face the west; welcoming the audience into a clearing in the black walnut grove. For larger community events such as concerts and movies in the park, the stage could be set to face the east and the sloped event lawn. Trees planted at the top and back of the event lawn slope would help mitigate some of the sound to neighboring properties.

The **Prairie Shelter** will welcome visitors with shade and a place to gather. There will be opportunities for educational signage for visitors to learn about the natural systems within a prairie.

The **Trailhead Kiosk** will welcome visitors that may arrive by car, parking at the north end of the park, or arriving from the pedestrian bridge, offering educational, historic, and wayfinding signage for the park.

Exterior lighting, complying with dark sky standards will be incorporated on or near buildings.

Gathering Areas

A **plaza** will be included at the Community building, providing building spill out space during educational and recreational events hosted at the building.

A small **woodland gathering** area will be included at the intersection of the walk from Allison Drive and the woodland walk, offering opportunities for rest, relaxation, reflection, wayfinding, and educational signage.

A **kettle council ring** will be incorporated into a natural kettle depression within the remnant woods. Small in scale, the council ring will offer the opportunity for visitors to learn about the natural systems and geologic history within the woodlands.

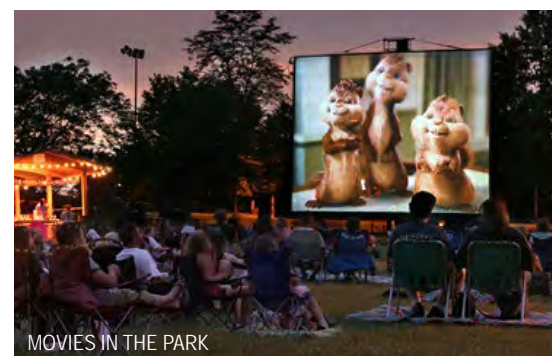
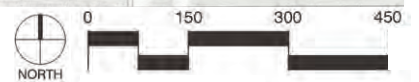




Figure 5.5 : Playgrounds



5.5 - Playgrounds

Traditional Playground

The **traditional playground** will serve as a welcoming entry and gateway treatment from the corner of CB and Shady Lane, and will be at the foreground of the new community building. The playground will be separated from the road with a stormwater swale and prairie berm, with shade trees separating the playground area from the community building. Playground structures will include a tower climbing structure (clearly visible from the roads), rope climbing structure, and swings to keep kids active.

Fitness stations will be included for caretakers to stay active while keeping an eye on children at the playground.

A **splash pad** will provide entertainment and summer cooling. It could be designed to be turned off during events for additional gathering space at the community building.

Nature and Music Play

A series of rooms nature play rooms will be incorporated into the spruce plantation. Existing trees will be preserved, and limbed up for access. A path will lead visitors between the rooms incorporating nature based sculptures, music areas, loose materials areas, and rope and tree climbers.



PLAY TOWERS



FITNESS STATIONS



NET CLIMBER



SPLASH PAD



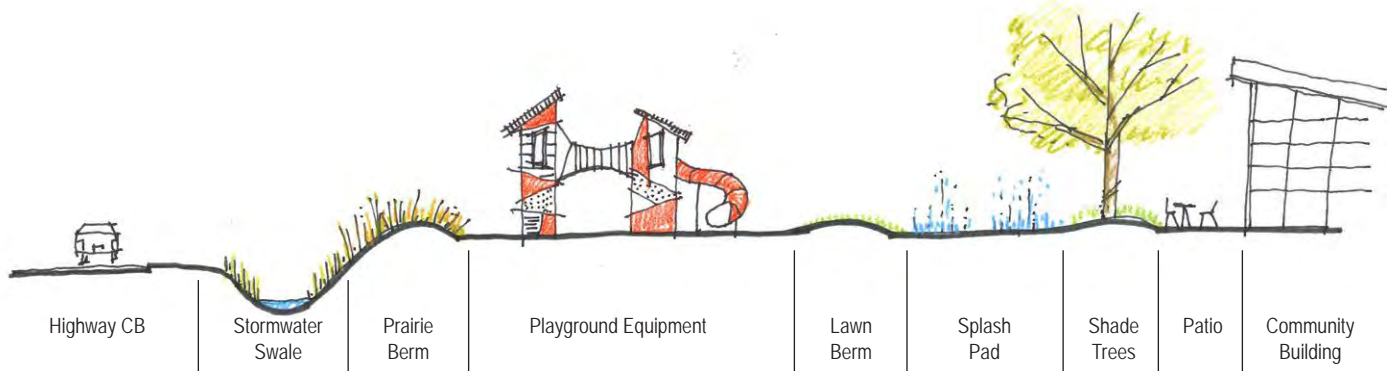
ROPE AND TREE CLIMBER



MUSIC PLAY



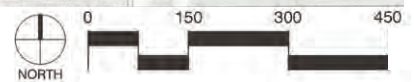
NATURE BASED SCULPTURE



CONCEPTUAL SECTION



Figure 5.6 : Sustainable Design



5.6 - Sustainable Design

Building Treatments

Sustainable design features should be incorporated into the community building, stage, and shelters. Buildings should be **LEED certified** and should include **energy efficient** fixtures, grey and roof water collection, as well as roof mounted **solar** arrays where feasible. The Village has already set a great precedent with the solar array at the Village Complex and has an opportunity to continue to be a good steward and example to Village residents as well as other communities through the sustainability based buildout of the Woodland Prairie Park buildings.

Landscape Treatments

Landscape treatments such as stormwater infiltration swales, raingardens, water harvesting, and pervious pavement in parking lots will help increase the on site water quality, reduce runoff, and improve infiltration.



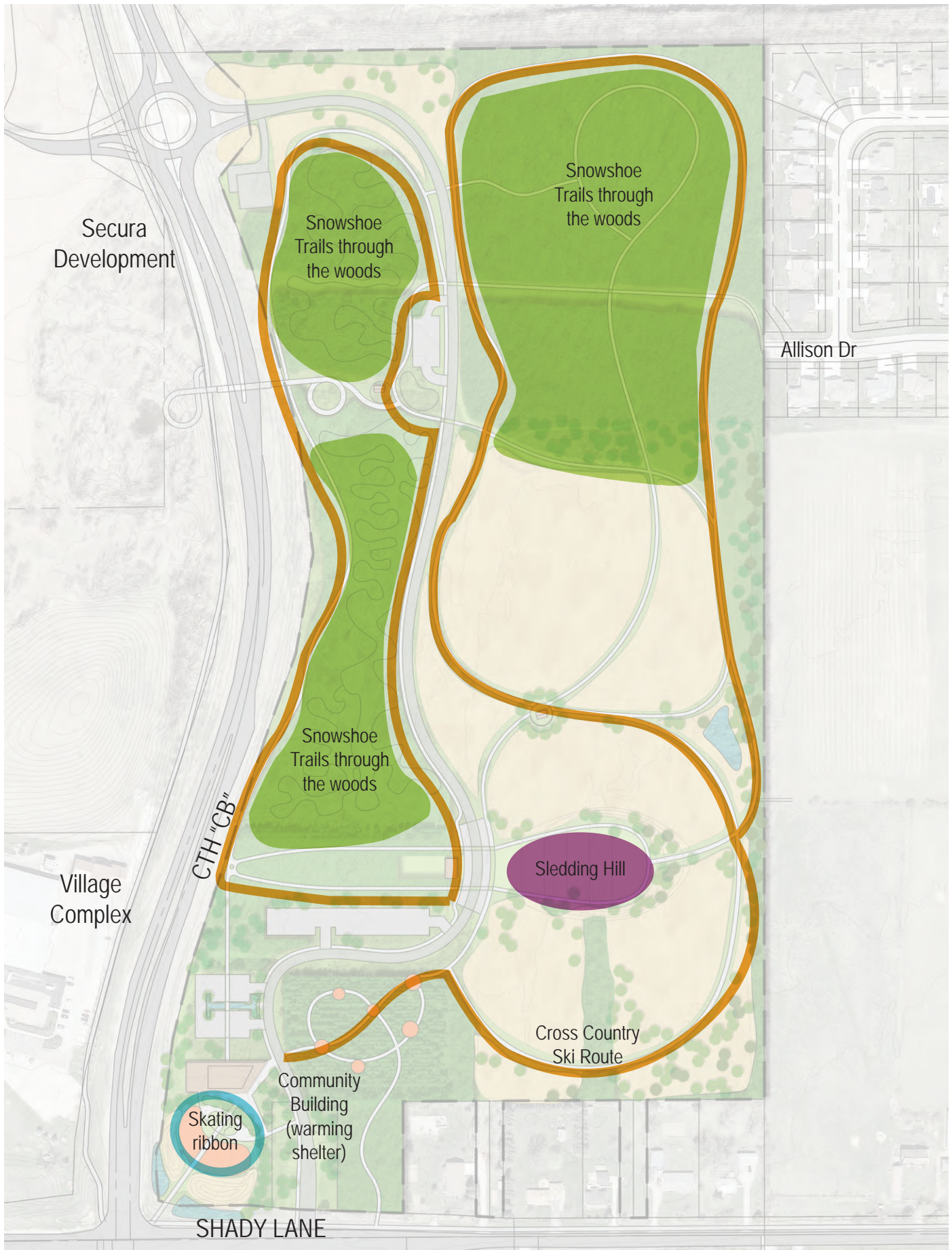
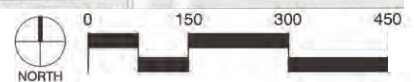


Figure 5.7 : Winter Activity



5.7 - Winter Activity

A community park should provide year round activity; below are ways in which Woodland Prairie Park can be activated in the winter months.

Ice Skating

The plaza and playground at the entry corner could be designed for a skating ribbon to circle the plaza and/or playground. The community building could then serve as a rental facility, restrooms, and warming house.



ICE SKATING

Sledding / Tubing

Sledding and tubing could take place on the sloped events lawn. The grading of the lawn would need to incorporate a flat portion at the bottom for sledders and tubers to come to a complete stop before the parking lot and parkway.



SLEDDING / TUBING

Snowshoeing

Meandering snowshoe trails could be incorporated into the woods and in the mountain bike area. Trails should connect to parking areas and to the community building.

Cross Country Skiing

Groomed cross country ski trails could be incorporated on paths and trails with longer straightaways. Trails should connect to parking areas and the community building



CROSS COUNTRY SKIING



SNOWSHOEING

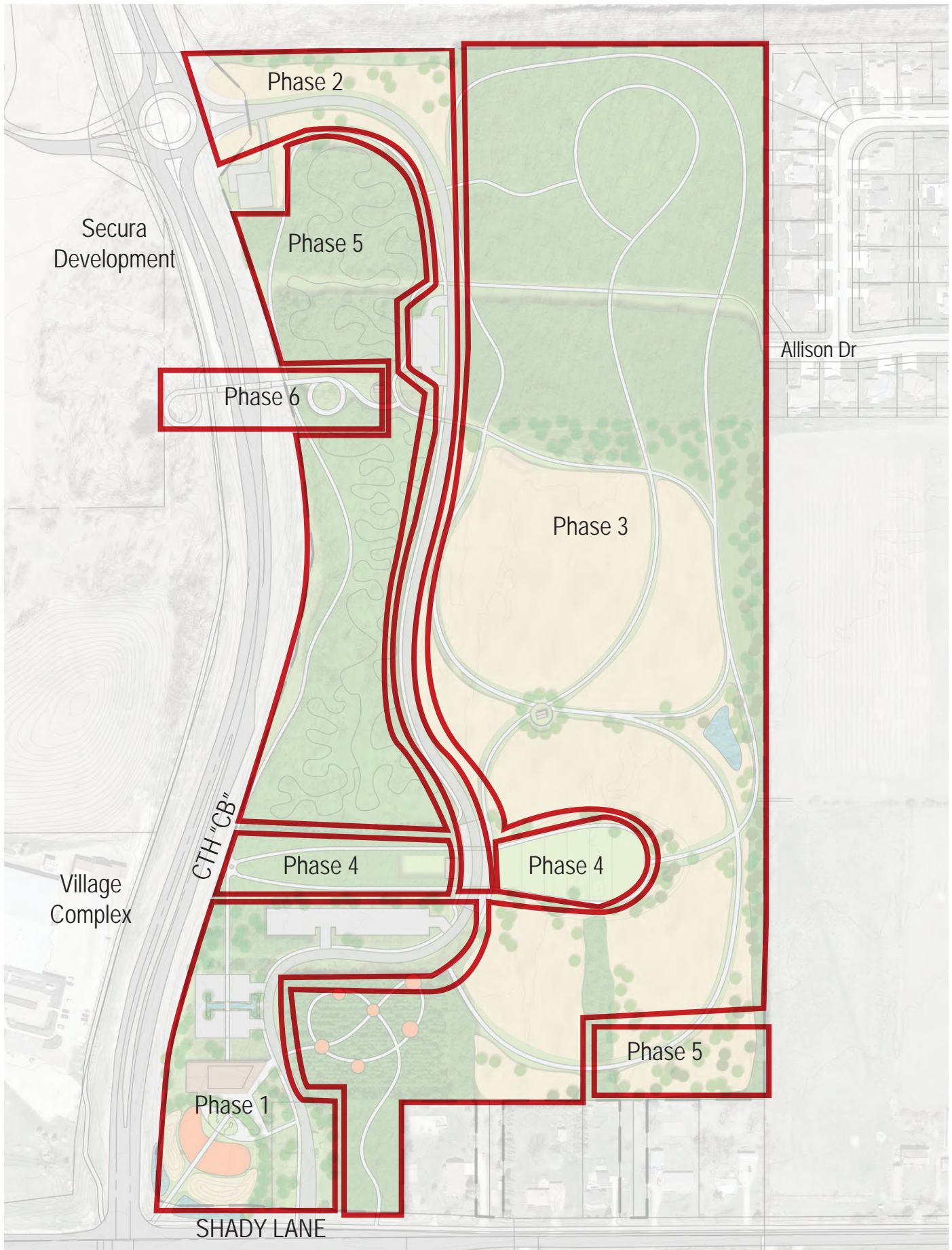


Figure 6.1 : Phasing Plan



Section 6: Implementation Strategy

6.1 - Phasing

In today's fiscal environment, successful project implementation is less straightforward than in the past. Most communities can't afford to make large capital investments without carefully aligning those investments with a multitude of funding sources and project partners. The proposed phasing strategy for developing Woodland Prairie Park reflects this reality. The strategy identifies five phases and includes including their estimated costs:

Phase 1 - Gateway Buildout (\$3.9 M)

- a. Relocate existing maintenance shed and yard to Village Complex across CB
- b. Community Building and plaza spaces
- c. Crosswalk enhancements and pedestrian connection to building
- d. Playground
- e. Fitness Stations
- f. Landscaping
- g. South parkway entrance and parking lots

Phase 2 - Parkway Extension to Roundabout (\$570 K)

- a. Removal of existing landform (assumed to be funded through Streets Department)
- b. North parkway entrance
- c. Parking lots
- d. Parkway connection to Community Building parking lots, including multiuse trail

Phase 3 - Habitat Restoration (\$2.3 M)

- a. Prairie restoration
- b. Woodland restoration, including removal of invasive species
- c. Trail development
- d. Nature and music playgrounds

Phase 4 - Community Performance Space (\$1.3 M)

- a. Performance stage
- b. Black walnut grove development
- c. Sloped events lawn

Phase 5 - Adrenaline Areas Buildout (\$450 K)

- a. Mountain bike trail development
- b. Ropes course

Phase 6 - Pedestrian Bridge and Adrenaline Buildout (\$3.2 M)

- a. Pedestrian bridge over County Highway CB and trail connection to park

6.2 - Grant Funding Opportunities

The following matrix summarizes potential grant funding opportunities as they relate to the development of Woodland Prairie Park.

	PROGRAM NAME	AGENCY/ORGANIZATION	POTENTIAL AWARD
1	Knowles-Nelson Stewardship Grant*	Wisconsin Department of Natural Resources (WDNR)	Up to 50% match Grants to help develop nature-based outdoor recreational areas
2	Recreational Trails Aids Program*	Wisconsin Department of Natural Resources (WDNR)	Up to 50% match Construction of new trails
3	Land and Water Conservation Fund (LWCF)*	Wisconsin Department of Natural Resources (WDNR)	Up to 50% match The development of public outdoor recreation areas and facilities
4	Community Development Block Grant – Public Facilities (CDBG-PF)**	Wisconsin Department of Administration (DOA)	Up to \$500,000 and 50% match Grants to help support facility projects
5	Environmental Stewardship Fund***	Community Foundation for the Fox Valley Region, Inc.	Up to \$2,500 Grants to enhance enjoyment of nature
6	People for Bikes Grant Program***	People for Bikes	Up to \$10,000 and 50% match Bicycle infrastructure projects
7	Community Commitment Program***	Secura Insurance Companies	Up to 50% match Projects that support the vitality of our local environment
8	KaBoom!***	KaBoom!	Up to \$15,000 Playground grants to help build safe places for kids to play
9	AARP Community Challenge	AARP	Grants range from several hundred to several thousand dollars. Projects that support livable communities.

*WDNR grants require a Comprehensive Outdoor Recreation Plan (CORP) for eligibility

**Must meet the national objective of low to moderate income to qualify

***Must be a 501c3 organization to qualify

TASKS TO COMPLETE	RESPONSIBILITY	POTENTIAL FUNDING SOURCES
Trail		1, 2, 3, 5, 6, 7, 9
Playground		7, 8
Walking/Skating Loop		1, 2, 3, 5, 6, 7, 9
Community Building		4, 6, 9
Mountain Biking Trails		1, 2, 3, 5, 6, 7

6.3 - Let's Get Started!

The importance of any successful initiative is to identify early demonstration projects which through their implementation create momentum and lead to successful long-term completion of the vision. The following action items will maintain the initiative as should be promoted as a priority in 2019.

1. Establish an overall Implementation Team, representing a mix of public, private, and non-profit partners with a strong interest in seeing Woodland Prairie Park come to fruition.
2. Prioritize and budget for capital improvement activities in 2020 and beyond.
3. Identify and meet with potential partners to identify areas of mutual interest and benefit.

Section 7: Appendix Index

Summary of Existing Plans and Park Trends	34
Stakeholder Engagement Plan	40
Staff Kickoff Meeting Summary	41
PRC Kickoff Meeting Summary	43
Public Engagement	45
Website Comments	46
Public Workshop	52
Woodland Prairie Park Alternatives Memo	56
Woodland Prairie Park Alternative A	58
Woodland Prairie Park Alternative B	59
Woodland Prairie Park Alternative C	60
Summer Safety Night - Alternatives Feedback	61
PRC Master Plan Preferred Concept Presentation Meeting Summary	68
Cost Estimate	70

SUMMARY OF EXISTING PLANS AND PARK TRENDS

2018 WOODLAND PRAIRIE PARK MASTER PLAN

Successful Park planning builds upon and supports prior planning efforts, several of which are summarized below:

Village of Fox Crossing MISSION, VISION, AND VALUES

The Village's mission/vision/values should inform all of the Village's activities including park development.

MISSION STATEMENT

The Village of Fox Crossing is committed to achieving excellence in the quality of life for all those who live in, work in or visit our community. We will continue to provide exceptional quality municipal services through the use of strategic planning, fiscal responsibility, transparency and responsive municipal leadership.

VISION STATEMENT

Fox Crossing will be a prosperous and fiscally sound family-oriented community valuing diversity, opportunity, and partnerships in a safe and attractive environment for our residents, businesses and visitors.

VALUES

- Service. Being respectful and committed to the needs of our internal and external community members.
- Integrity. Holding oneself accountable to the highest standards.
- Innovation. Being proactive and embracing change.
- Sustainability. Being environmentally, socially and economically responsible.

Village of Fox Crossing Comprehensive Plan (2018-2038)

The City's official Comprehensive Plan is in the process of being updated. Several relevant vision statements, goals and objectives from the April 2018 draft Comprehensive Plan can help inform development of Woodland Prairie Park including:

VISION STATEMENT

"The Village of Fox Crossing is a model of sustainable growth and development. The Village is a regional employment center with a diversity of large office and light industrial businesses that provide for a resilient local economy. Retail developments are modest in size, unique in design and accessible by foot and bike. A variety of housing choices exist and every neighborhood has high-quality parks linked by a network of bike and pedestrian facilities. The Village is a safe and family-friendly community."

Relevant Goals, Objectives, Strategies:

- Maintain attractive neighborhoods that have safe and convenient access to daily education, retail and recreation needs.
- Grow the Village's network of off-road bike and pedestrian facilities. Biking and walking in the Village will be safe, enjoyable and efficient.
- Ensure adequate and appropriate right-of-way dedication for existing and future streets, bicycle and pedestrian facilities as land is platted.
- Protect environmental corridors (e.g. floodplains, natural drainage ways, wetlands, open water, steep slopes >20%, mature woodlands > 1 acre) from development to improve fish and wildlife habitat, water quality and reduce stormwater management problems and other environmental problems caused by improper development.

- All residents will have access to open space and recreational activities.
- Develop a cohesive and attractive sense of place along community gateways by implementing unique public streetscaping improvements (e.g. decorative lighting, landscaping, wayfinding, street and gateway signage) and requiring higher quality private development site and building designs.

In addition, several park related comments were gathered during the comprehensive planning process. A representative sample of comments including those pertaining to Woodland Prairie Park are shown below:

When asked Should the Village invest more tax dollars to improve the quality of any of the following public facilities or services? Top responses were:

1. Street Maintenance (51%)
2. Bike/ped facilities (33%)
3. Drinking water quality (28%)
4. Parks (27%)

When asked indicate your level of agreement: the Village should expand its use of alternative and renewable energy?

87% of respondents indicated yes

When asked which of the following park and recreation amenities would you like to be added, improved or expanded in Fox Crossing either by the Village or other public or private entities, the top responses were:

1. Off-road walking/biking trails (32%)
2. Dog park (30%)
3. Nature preserve (27%)
4. Outdoor pool (26%)
5. Splash pad (19%)

A map based exercise showed following comments in and adjacent to Woodland Prairie Park

- Preserve Woodland Prairie Park
- Recreation park/complex for concerts synchronized musical fireworks major events, community programming, sporting activity-co developed with private life style retail and destination projects include trails and observatory that rises above the area with views over a 5-10 mile radius
- Buy out quarry for development of the recreation complex as outlined above
- North of Shady should be 4 lanes (2 each way)
- Woodland park when developed should involve more trails for hiking and left natural for wildlife

VILLAGE OF FOX CROSSING: COMPREHENSIVE OUTDOOR RECREATION PLAN 2017-2021

The Village of Fox Crossing Comprehensive Outdoor Recreation Plan 2016-2020 (CORP) provides guidance for future parks and open space development and acquisition which are intended to improve the quality of life for village residents.

Current parks and open space amenities within the system were reviewed for improvements. Future parks and open space needs were determined through analysis of projected 2030 population figures and forecasts to anticipate additional lands or facilities which are needed to serve 2030 population levels and distribution.

The plan sets forth priorities for implementation for the 2017 to 2021 planning period, and was prepared by the Village Park Commission with assistance from the East Central Wisconsin Regional Planning Commission.

Key findings from the CORP:

In Fox Crossing, the bulk of the neighborhood population exists just west of I-41. As new development encroaches upon agricultural land, parks will need to be made available to serve those growing subdivisions as well as to support the current population in the surrounding area.

The CORP identifies Woodland Prairie Park as a Community Park. Community Parks serve several neighborhoods within a one-two mile radius. Typically, these parks are twenty-five acres or more. Community parks address broad base community-wide needs. For example, community parks provide athletic fields while preserving areas for passive recreational uses. Amenities typically include:

- Athletic courts, fields, or playfields;
- Boat launches;
- Ice rinks;
- Landscaped/natural areas with trails;
- Parking;
- Pavilion/shelter with kitchen;
- Picnic tables/grills;
- Playground equipment;
- Restrooms;
- Sledding hills/tobogganing runs
- Swimming pools

Accessibility should be by vehicle, biking, and on foot. These parks should be linked to the public transportation system, existing and future trail network and sidewalks.

The village has seven community parks totaling 211.53 acres. The parks have many of the typical amenities, except for a swimming pool. The complete list of parks and amenities is listed in the following table:

Table 11: Amenities in Community Parks

COMMUNITY PARKS	ACRES	BASEBALL/SOFTBALL	BASKETBALL COURT	BOAT LAUNCH	CANOE/KAYAK LAUNCH	DISC GOLF	FISHING	FITNESS ZONES	ICE RINK	NATURAL AREA / TRAIL	OPEN PLAYFIELD	PAVILION W/ KITCHENS	PARKING	PICKLE BALL COURT	PICNIC TABLES / GRILLS	PLAYGROUND EQUIP.	RESTROOMS	SHELTER	SLEDDING HILL	SNOW SHOE/XC (informal)	SOCCER FIELDS	TABLE TENNIS	TENNIS COURTS	TRAILS	VOLLEYBALL COURT
Fritsch	18.49		x				x	x	x	x	x	x	x	x	x	x	x	x		x	x	x	x		
Fritsch/Rydell	15.26			x	x		x			x				x	x	x	x	x	x						x
O'Hauer (N/S)	64.37	x				x				x	x	x	x	x	x	x	x		x	x			x		x
Palisades	14.85	x	x							x	x	x	x	x	x	x	x						x	x	x
Schildt	10.02		x							x	x	x	x	x	x	x	x								x
Wittmann	25.03	x	x										x	x	x	x	x				x		x		
Woodland Prairie	63.51				undeveloped					x				undeveloped						x					
Total:	211.53																								

Source: Village of Fox Crossing, 2016.

The CORP identified the following RECOMMENDATIONS AND IMPROVEMENTS FOR Woodland Prairie Park:

- Revise the concept master plan completed in 2008 to start implementing the strategies and development of the park
- Explore the possibility of an adventure type park (American Ninja Warrior) with obstacle courses or a mountain bike pump track
- Impact fee study should be redone to accommodate for the current rate changes and new development that is occurring (Village vs. Town rates)
- Add in nature trails throughout property
- Keep the property nature-based vs. sports oriented as the name implies

A needs preference assessment ranking was done for separately for Woodland Prairie to regain a prospective of what the public is looking for in that park since the masterplan was completed in 2008. The results below show a mixed feeling of amenity types needed. Trails were number 1 followed by sports fields in the overall ranking of 0-4.

Table 21: Woodland Prairie Amenity Need Preference Rankings

Amenity Type - Woodland Prairie										
Sports Fields	4	4	3	2	1					14
Family Park Services	3.5	3	2.25	2	2					12.75
Open Space	3.5	2.5	0.5	0.5	0.5					7.5
Trails	3.5	3.5	3.5	3.5	3.0	3.0	2.5	0.5		23

CB Park Master Plan

In June of 2008, the village hired Ruckert-Mielke Associates to develop a master plan for the site. Conceptual plans call for a possible fishing/waterfowl pond, a splash pad, and a sustainable wood playground with an environmental theme, a community center building, a large picnic area, numerous shelter/restroom facilities, an amphitheater, and a Veteran’s Memorial at the southwest corner of the park. Native prairie and preservation of the wooded areas with an invasive species control plan will be included in the developing efforts.

Park Trends

The following is a partial list of key park trends compiled from a variety of sources.

1. There are several major demographic changes that should be kept in mind as we design new park facilities. These include:

- By 2030 only about a ¼ of households will have children.
- Generation Y and Seniors are looking for walkable communities, with parks, community facilities, grocery stores, cafes, restaurants, and pharmacies located within walking distance .
- The Village will continue to grow and add more households through 2040, but the average size of households will continue to decline.



Source: Reshaping Metropolitan America: Development Trends and Opportunities to 2030 (Metropolitan Planning + Design) 2nd edition by Nelson Ph.D. FAICP, Dr. and Village of Fox Crossing Comprehensive Plan (2018-2038)

2. The nation's public parks and recreation are leaders in improving the overall health and wellness of the nation. They are essential partners in combating some of the most complicated challenges our country faces – poor nutrition, hunger, obesity, and physical inactivity.

Source: <https://www.nrpa.org/our-work/Three-Pillars/role-of-parks-and-recreation-on-health-and-wellness/>

3. New recognition of the health and safety benefits of parks is changing how the public and leaders view green spaces. From physical and mental health, to economic development, to resilience and sustainability, parks offer myriad tangible benefits. Alongside their environmental benefits, parks have demonstrated time and time again their ability to stabilize communities and drive economic development. According to the Trust for Public Land, well-maintained parks add 15 percent to the value of homes within 500 feet.

Source: <https://www.cnu.org/publicsquare/2016/11/17/parks-not-just-picnics>

4. Parks are increasingly seen as key economic development ingredients for successful communities. A 2015 study by the Indiana University Public Policy Institute found that the value of all properties within one block of the trail have collectively increased by more than \$1 billion since its construction in 2007.'

Source: Parks & Recreation | September 2017 The Economic Benefit of Downtown Parks, Cynthia Bowen

5. The key to successful parks is designing for and understanding that parks are programmed not only by the events held there, but also by the infrastructure that is provided for people to do things (Bocci courts, ping pong tables, carousels, ice skating rinks, reading rooms, swings, jungle gyms, bbq pits, mote boat ponds, etc.). All of these activities stimulate people to perform which entertains other people who are watching. Successful public spaces are fabulous places for people-watching.

Source: David Milder, Personal Communication

6. The world's most liveable cities are not necessarily the richest or most beautiful, yet they excel in sociability: friendly streets, mixed neighbourhoods, vibrant public spaces. "When we ask people to think about their city aspirations, we find social connectedness comes out top of the list," said Joffe. "People want to be part of a community in cities...Regardless of whether you're an introvert or an extrovert, social interaction remains the most important factor in wellbeing."

Source: <https://www.theguardian.com/sustainable-business/2016/dec/08/building-liveable-cities-loneliness-affordability-green-spaces-air-pollution-rooftop-gardens-community-cycling>

7. Parks are increasingly seen as key assets in the effort to improve public health. For example, walking thirty minutes a day—as little as a mile at each end of a daily commute, for example—lowers the risk of heart disease by up to 40 percent, reduces the risk of Type 2 diabetes by as much as 60 percent, and can cut the risk of stroke by a third. Osteoarthritis? Walk thirty minutes a day, and reduce your risk by 18 percent.

Source: Street Smart: The Rise of Cities and the Fall of Cars” by Samuel I. Schwartz, William Rosen

8. Wisconsinites Enjoy Outdoor Recreation

According to the 2011-2016 Wisconsin Statewide Comprehensive Outdoor Recreation Plan, over 87% of Wisconsinites enjoy some form of outdoors recreation. The top 5 outdoor activities by participation rate (16 and over) are:

- Walk for Pleasure (88%)
- Gardening or landscaping (65%)
- View/photograph natural scenery (65%)

- Attend outdoor sports events (65%)
- Family gathering (64%)

According to the same study, the highest growth in recreational activities over the period 1994 to 2009 for ages 16 and over included:

- Handball or racquetball outdoors (993% increase)
- Soccer outdoors (715% increase)
- Kayaking (605% increase)
- Surfing (332% increase)
- Football (201% increase)
- Horseback riding (180% increase)
- Rock climbing (131% increase)
- Use personal watercraft (123% increase)
- Golf (112% increase)
- Snowboarding (112% increase)

Source: Wisconsin Statewide Comprehensive Outdoor Recreation Plan

Woodland Prairie Park Stakeholder Engagement Plan (4.11.18)

Roles, Responsibilities, and Participation Opportunities

	Residents, Taxpayers	Parks and Recreation Commission	Village Staff	Consultants	Fox Crossing Village Board
Task 1 Meetings		Define Project Success	Define Project Success Coordinate with Consultant on all tasks Keep Village Board informed		Stay informed
Task 2 Data Collection		Champion the Process	Provide Information on Existing Conditions and Proposals Impacting Park	Assess Existing Conditions	Stay informed Champion the process
Task 3 Alternatives	Share Priorities for Park Visioning Workshop May 15 -Park goals/objectives -Programming ideas Alternatives Workshop June 21 -Preferred plan	Agree on Shared Priorities/Design Objectives Evaluate Alternatives Select Preferred Alternative	Identify Technical Concerns	Summarize Stakeholder Input Identify Shared Priorities/Design Objectives Prepare Alternatives	Attend and participate in public workshops
Task 4 Final Recommendation	Encourage Elected Officials to Support or Reject Plan	Recommend Park Plan to Village Board for Adoption	Develop implementation plan in conjunction with consultant Keep Village Board informed	Prepare Draft and Final Plans	Adopt Park Master Plan
Task 5 Final Report				Provide Master Plan and Full Appendices	

Project Phase

Fox Crossing Woodland Prairie Park Conceptual Master Plan

Staff Kick Off Meeting Summary

April 11th 2018

Participants: See Meeting Sign-In Sheet

1. Introductions

- a. Participants introduced themselves
- b. Village in process of updating Comprehensive Plan, final adoption July, June Planning Commission. Relevant information for parks planning.

2. Review overall project timeline and key milestones (poster board)

- a. Dane reviewed project schedule
- b. Bi-weekly check in calls with Parks Director
- c. Budgeting process – Departments in July/August, Village Manager starts late August
- d. Summer Safety Night good opportunity to piggy back public engagement efforts. June 21st could be good date for feedback no Alternatives
- e. April 21st Electronics Recycling Drop Off at Municipal Garage; opportunity to market survey and visioning workshop date
- f. June 13 PRC Meeting to approve alternatives prior to outreach at June 21st Safety Night

3. Review draft stakeholder engagement plan

- a. Dane facilitated discussion of appropriate roles for staff, PRC, Village Board, and residents using handout
- b. Share information with sustainability committee, plan commission, which both can be champions of the park planning process
- c. Village Board should attend public meetings; do not need interim presentations
- d. Other potential stakeholder groups to provide extra input opportunity
 - i. Secura, which has walking trails planned for new facility (do not ask for funding)
- e. Stakeholder engagement plan updated, reflecting discussion with Village staff and PRC members

4. Discuss hopes and concerns for the planning process

- a. Keep Board involved, informed, similar to comprehensive planning process
- b. Jeff Sturgill, Amanda Geiser will do outreach to Village Board
- c. Need buy-in from Village Board
- d. Should be a destination park, special place in the community

5. Visioning discussion - Facilitated discussion of programming and design ideas for park

- a. Create a Destination
- b. Activities are important
- c. Shakesporean plays
- d. Events
- e. Movies in the park
- f. Ampitheater
- g. Town Square focal point of activity

- h. Function like a downtown, a central place that draws the community together
- i. Place, venue for community events, celebrations
- j. 4 season pavilion, community center
 - i. Rentals, events, education
 - ii. See Brookfield, Wis example
- k. Performance space, stage with power, restroom, limited facilities
- l. Parking and supplemental parking must be addressed, opportunity to collaborate with Secura on parking supply
- m. Factor in future reconstruction of Shady Lane, will include trail, resulting in good bike/ped access from most neighborhoods on west side
- n. Farm markets, car shows
- o. Stormwater pond along Shady Lane proposed for next 5 year plan
- p. Development of Community Building at intersection of CB & Shady Lane
- q. Balance of fields, nature
- r. Tournament space is lacking in Fox Cities
 - i. Soccer, other uses could be partially paid for through room tax funds
- s. Ogden Plan
 - i. Long term access point to park
 - ii. Pedestrian access to park
- t. Importance of park as enhancing Village Identity, Branding
- u. Event attraction, daily attractions important

Fox Crossing Woodland Prairie Park Conceptual Master Plan

PRC Kick Off Meeting Summary

April 11th 2018

Participants: See Meeting Sign-In Sheet

1. Introductions

- a. Participants introduced themselves

2. Review overall project timeline and key milestones (poster board)

- a. Dane reviewed project schedule
- b. PRC chose May 15 2018 as Visioning Workshop Date. Workshop to be interactive, open house format from 5:00pm-7:30pm with a short presentation at 6:30pm
- c. After the workshop SEH will debrief with PRC and confirm program prior to developing alternatives
- d. Mike Lynch provided newspaper clipping "Park Site Has Rare Mix of Plants."

3. Review draft stakeholder engagement plan

- a. Dane facilitated discussion of appropriate roles for staff, PRC, Village Board, and residents using handout
- b. Stakeholder engagement plan updated, reflecting discussion with Village staff and PRC members

4. Discuss hopes and concerns for the planning process

- a. Have existing 18 hole disc golf course
- b. Think Big, Think Long-Term
- c. Keep open mind in planning process

5. Visioning discussion - Facilitated discussion of programming and design ideas for park

- a. Nature as common denominator
- b. Emphasis on natural history
- c. Cross country and walking trails
- d. Ampitheater
 - i. As destination
 - ii. Lawn area
- e. Community gatherings
- f. Fireplace
- g. Splash pad
- h. Nature playground
- i. Park as "on the map" identity
- j. Park Pavilion/Community Building
 - i. Pottery, wildlife, classes, programming, natural sciences
 - ii. Skating rink
- k. Singage within the woods
- l. High ropes / ropes course
- m. "Different than all other parks."

- n. Think more modern, younger generation coming
- o. Go to “do something”
 - i. Activities
 - ii. Music
 - iii. Fireworks
- p. Keep Secura employees, future residential development in mind
- q. Pedestrian bridge
- r. Biking, active
- s. Mountain biking
- t. Gateway treatments
- u. Car centric or leave your cars at the edge and walk/bike in
- v. Climbing tower
- w. Art/mural component – historical perspective

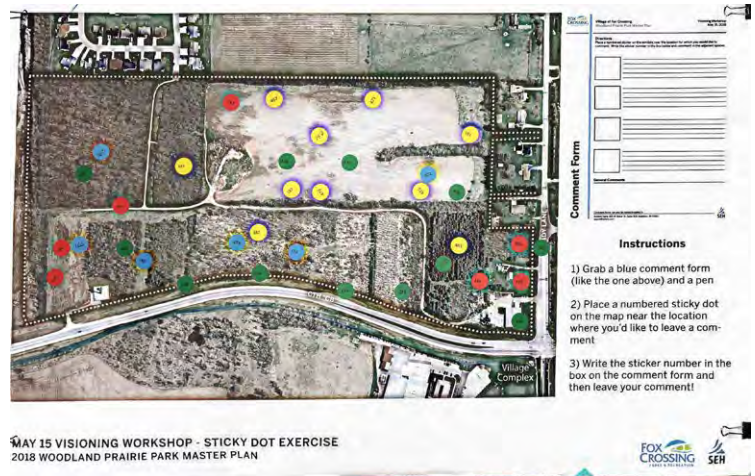
Public Engagement

Website (available throughout the project)

An aerial photograph of the park was hosted on communityremarks.com and offered citizens the opportunity to post comments related to park activities, connectivity, built structures, and general comments. There were over 100 comments submitted.

Community Visioning Workshop 5.15.18

An evening public workshop was held to inform community members of the project process and to gain feedback on the preferred activities for the park. A discussion was led to generate project guiding principles. Three stations were provided to get a broad understanding of the attendee's preferences. Stations included a dot exercise in which attendees could visually vote on their preferred activities, a map and comment cards (of similar format to the website), and a design your own park activity.



Comment	Date	Commenter	Email	Like Votes	Dislike votes	Topic	Comments	Demographic	Comment Type
1	4/18/2018 9:16	Anonymous		3		Connectivity	I think the Village should make a highly visible park entrance at this corner. This entrance to the park should be accessible by foot and bike as well as by vehicle. I would like to see better trail connections to the park	Work in Fox Crossing	Issue
2	4/18/2018 20:07	Anonymous		5		Connectivity		Work in Fox Crossing	Opportunity
3	4/26/2018 16:01	Anonymous		4		Connectivity		Work in Fox Crossing	Issue
4	4/29/2018 22:43	Jim Zielinski	Jimmyszki@aol.com	3	1	Connectivity	The entire property presents a spectacular opportunity for a public/private partnership that includes recreational, entertainment, retail, and commercial use. Anchored by an amphitheater that extends out to feature entertainment and vendor/temporary retail. Open space can be used for concert goers and community events that can become iconic in nature, appealing to families and businesses. An indoor/outdoor sports center is included in a mixed use structure overlooking the complex. Privately operated restaurants and nightclubs with enhance a year round appeal. High end multifamily residential units will lie on the corners, offering unique patio views. Parking will be a mix of underground and surface space in and around the complex. Easy service access will be incorporated for both delivery, staging, and trash disposal along routes that also surround the complex. Strategic lighting will be placed appropriately to conform with Comprehensive Planning standards and also have spotting to focus on appropriate events held on site in either the open air space or the amphitheater. Ample security measures will include structural entities that also serve as ingress/egress points. The parklike setting will have year round options such as an ice rink, fountain/children's play area, carousel, and other park amenities. The public investment will include sponsorship and naming rights opportunities and involve area service clubs and community groups who will utilize the site for fundraising with a portion of proceeds going back into the public portion of the project. The big picture idea behind this concept is to give the community a focal point as a 'city center' for innovation, (design, technologic, earth friendly, user friendly, and community pride). It will be the center of robust living, working, and community outreach to catapult the Village as a leader, innovator, and trend setter in the Fox Cities.	Live in Fox Crossing	Opportunity
5	5/19/2018 14:00	May 15 Workshop		1		Connectivity	There needs to be a recreation trail on Shady Lane for foot access to park. People will walk to the park with or without the walking access for safety, we need the trail.	Live in Fox Crossing	Opportunity
6	5/19/2018 14:04	May 15 Workshop				Connectivity	Access roads	Live in Fox Crossing	Opportunity
7	5/19/2018 14:05	May 15 Workshop				Connectivity	Access road	Live in Fox Crossing	Opportunity
8	11/28/2018 16:33	Chris	christophercfoowler@gmail.c	1		Connectivity	As stated here, and a popular point in the neighborhood: Lots of children including my own play in this quiet low traffic neighborhood. We would all be against a vehicle entrance or an increase in traffic through here. Please keep this in mind!	Live in Fox Crossing	Issue
9	4/26/2018 20:08	Anonymous		7		General Comm	With 64 acres it would be wonderful to have a area for a dog park... Living in Fox crossing it's either going to the other side of Appleton or off of county Y in Oshkosh for off leash play time for my pup have such a little yard it would be so nice to have something so much closer to home	Live in Fox Crossing	Opportunity

10	4/26/2018 20:17	Chris Taylor			7	General Comm	<p>This would be a great opportunity to open a dog park in the area. Outagamie County Dog Park is 15 minutes away and Best Friends Dog Park is 20 minutes, which would put this park in a great location to serve the community!</p> <p>Regarding Woodland Prairie Park, I would love to see a trail that could be used in all seasons: XC skiing, hiking, etc. Some areas should stay natural.</p> <p>If a water venue is broached, please consider that a pool is usable by a much wider age range than a splash pad.</p> <p>Tennis court would be nice.</p>	Live in Fox Crossing	Opportunity
11	4/26/2018 22:34	Anonymous	lhein@new.rr.com		2	General Comm	<p>Finally, the CB trail offers the possibility for walk-in and bike-in access, so we should make sure the park is safely accessible by those means.</p> <p>The new park should include a pool and/or splash pad. Basketball courts or ice skating rink would be some nice ideas.</p>	Live in Fox Crossing	Opportunity
12	4/28/2018 7:08	Jessica Koller				General Comm	<p>I would love for the park to be very environmentally focused. I would like native Wisconsin plants planted. Trees, wildflowers, shrubs etc. Even just a simple small area as a butterfly garden. Recycling options and a water fountain that can fill reusable water bottles. If possible, use toilet paper made from 100% recycled paper. Also if people could put up bird and bat houses and maybe a feeder.</p>	Live in Fox Crossing	Opportunity
13	4/28/2018 13:16	Kahly OBoyle			1	General Comm	<p>For the 64acre Park. A man made natural swimming beach/pond would be a cool option for the park. It could be stocked with fish. Similar to Wuzze lake in black river falls. The white sand beach is amazing.</p> <p>I can't make it tonight to the meeting. Please plan for a high quality distinct dog park with special features such as agility course items or at a minimum for a small cordoned off area for dogs to roam free that is smaller than a traditional dog park. We NEED something CLOSE to this area as opposed to having to drive all the way to French Road, practically in Little Chute. Please check out this link for GREAT IDEAS and information for planning the dog park: https://www.citylab.com/life/2017/04/how-to-design-the-best-dog-park/522870/</p>	Live in Fox Crossing	Opportunity
14	5/3/2018 8:42	MARY Piton	abel.mary.m@gmail.com			General Comm	<p>We have the opportunity and space to distinguish ourselves as a premium park for every body, including our very special fur babies.</p> <p>We have an opportunity here to create an environment for everyone to enjoy, not just people who don't have dogs. Of course the space that will be available that will not include dogs would be immense in comparison to a small area for dogs. Statistically there are many dog owners. According to the United States Pet Population in Ownership Trends Report 2017 July: 55% of households now have pets, the majority being dogs. An excerpt from that report states, "Millennials clearly have bought into the idea of pet ownership. Those in the 18- to 34-year-old age group already have the highest likelihood of owning a pet, while 43% of those in this key demographic cohort who do not have a pet now say they want one in the future." And even states that more than 40% of baby boomers own pets, mainly dogs and that this statistic is on the rise.</p> <p>In essence, having a dog park, particularly one that is unique and multi-faceted will attract both young and old members to reside in and help to build our community.</p>	Live in Fox Crossing	Opportunity
15	5/15/2018 16:55	Anonymous			1	General Comm	<p>We have the opportunity and space to distinguish ourselves as a premium park for every body, including our very special fur babies.</p> <p>We have an opportunity here to create an environment for everyone to enjoy, not just people who don't have dogs. Of course the space that will be available that will not include dogs would be immense in comparison to a small area for dogs. Statistically there are many dog owners. According to the United States Pet Population in Ownership Trends Report 2017 July: 55% of households now have pets, the majority being dogs. An excerpt from that report states, "Millennials clearly have bought into the idea of pet ownership. Those in the 18- to 34-year-old age group already have the highest likelihood of owning a pet, while 43% of those in this key demographic cohort who do not have a pet now say they want one in the future." And even states that more than 40% of baby boomers own pets, mainly dogs and that this statistic is on the rise.</p> <p>In essence, having a dog park, particularly one that is unique and multi-faceted will attract both young and old members to reside in and help to build our community.</p>	Live in Fox Crossing	Issue
16	5/15/2018 17:17	Gretchen	gretchen.weyenberg@gmail.com			General Comm	<p>We have the opportunity and space to distinguish ourselves as a premium park for every body, including our very special fur babies.</p> <p>We have an opportunity here to create an environment for everyone to enjoy, not just people who don't have dogs. Of course the space that will be available that will not include dogs would be immense in comparison to a small area for dogs. Statistically there are many dog owners. According to the United States Pet Population in Ownership Trends Report 2017 July: 55% of households now have pets, the majority being dogs. An excerpt from that report states, "Millennials clearly have bought into the idea of pet ownership. Those in the 18- to 34-year-old age group already have the highest likelihood of owning a pet, while 43% of those in this key demographic cohort who do not have a pet now say they want one in the future." And even states that more than 40% of baby boomers own pets, mainly dogs and that this statistic is on the rise.</p> <p>In essence, having a dog park, particularly one that is unique and multi-faceted will attract both young and old members to reside in and help to build our community.</p>	Live in Fox Crossing	Issue

17	5/15/2018 17:19	Gretchen							We have an opportunity here to create an environment for everyone to enjoy, not just people who don't have dogs. Of course the space that will be available that will not include dogs would be immense in comparison to a small area for dogs. Statistically there are many many dog owners. According to the United States Pet Population in Ownership Trends Report 2017 July: 55% of households now have pets, the majority being dogs. An excerpt from that report states, "Millennials clearly have bought into the idea of pet ownership. Those in the 18- to 34-year-old age group already have the highest likelihood of owning a pet, while 43% of those in this key demographic cohort who do not have a pet now say they want one in the future." And even states that more than 40% of baby boomers own pets, mainly dogs and that this statistic is on the rise. In essence, having a dog park, particularly one that is unique and multi-faceted will attract both young and old members to reside in and help to build our community.	Live in Fox Crossing	Issue
18	5/26/2018 15:09	Jason Albertson	gretchen.weyenberg@gmail.com albjas23@gmail.com						A nice big playground, splash pad, and walking/biking trails would be great! Sorry I wasn't able to attend the 5/16/18 meeting on Woodland Prairie Park. As someone who lives nearby and uses the park frequently, my suggestion would be to consider making the park a "silent sports" type park. We already have people using the area for walking, jogging, hiking, biking, bird watching, cross country skiing and snow shoeing. These types of activities have little to no impact on the environment or surrounding neighborhoods. If a trail system were to be developed for access to the entire park for these activities, it wouldn't even be necessary to put any roads into the park, just a parking area. I imagine this would save a lot of money and maintenance along with maximizing the natural spaces. Some picnic areas, shelters, and facilities would be nice. One other major point, I know lots of people are asking for a dog park, but I would ask only that leashed dogs be allowed on all the trails. Us dog owners have very few options for enjoying nature trails with our dogs around here. Finally, I'm sure the large earth mound on the northwest corner is destined for something, but my husband and I greatly enjoy hiking and running up it for exercise. It would be wonderful to incorporate it into a trail. Thanks for the opportunity to share my thoughts.	Live in Fox Crossing	Opportunity
19	5/16/2018 9:49	Amy Frank							http://minnesota.cbslocal.com/2017/09/13/accessible-obstacle-course/amp/	Live in Fox Crossing	Opportunity
20	5/18/2018 11:11	Anonymous							This would be great and something totally different from other parks in the area. Keep park as natural as possible. Teach people where we live and how important our environment is to our community life	Travel to Fox Crossing	Opportunity
21	5/19/2018 13:41	May 15 Workshop			1				I think whatever is done should be "sustainable"; Keep it wild and heavily treed!	Live in Fox Crossing	Issue
22	5/19/2018 13:48	May 15 Workshop			1				In general I would recommend keeping this park as natural as possible. All the Village parks are loaded with playgrounds, moved grassy areas, sports fields, etc...it would be nice to have one devoid of such development for those of us who like some measure of solitude.	Live in Fox Crossing	Issue
23	5/19/2018 13:55	May 15 Workshop			1					Live in Fox Crossing	Issue
24	5/19/2018 14:11	May 15 Workshop								Live in Fox Crossing	Opportunity
25	5/19/2018 14:11	May 15 Workshop								Travel to Fox Crossing	Opportunity
26	4/18/2018 20:05	Anonymous			17				This area contains a rich mix of plant species. It should be preserved.	Work in Fox Crossing, O	Opportunity
27	4/26/2018 15:51	Anonymous							This forest would be nice for mocking	Live in Fox Crossing, O	Opportunity
28	4/29/2018 22:56	Anonymous			8				I don't want to hear loud noises like music playing.	Live in Fox Crossing	Issue

29	4/30/2018 14:47	Anonymous		1	Other		A swimming pool/water park would be ideal for the new park. I am concerned with the level of noise and bright lights that may impact neighboring homes, should an amphitheater/concert venue/etc. be built.	Live in Fox Crossing	Opportunity
30	5/2/2018 10:07	Nearby Resident	Petersfam621@gmail.com	6	Other		Please do not utilize Allison Dr. as a driving route into the park - many children bike and play near/on this road and there is no sidewalk.	Live in Fox Crossing	Issue
31	5/2/2018 10:10	Anonymous	Petersfam621@gmail.com	12	Other		I kinda like the area as is, you can just go for a quiet walk in the woods, why do you feel the need to add a concert venue.	Live in Fox Crossing	Issue
32	5/2/2018 15:38	Anonymous		8	Other		My vote is leave as is, just a green space with walking trails only.	Live in Fox Crossing	Opportunity
33	5/3/2018 20:30	Anonymous		5	Other		Leave as is. I have almost 150 years of family heritage here. I already handed over almost 10,000.00 in a special assessment fee for this place. I don't want to pay anymore for this place. Please choose your community by what it already has. Don't move here and then try to change things. You want a pool, go move into the city. Don't expect the rest of us to pay for your wants.	Live in Fox Crossing	Issue
34	5/3/2018 20:30	Anonymous		4	Other		Leave as is. I have almost 150 years of family heritage here. I already handed over almost 10,000.00 in a special assessment fee for this place. I don't want to pay anymore for this place. Please choose your community by what it already has. Don't move here and then try to change things. You want a pool, go move into the city. Don't expect the rest of us to pay for your wants.	Live in Fox Crossing	Issue
35	5/15/2018 16:15	Anonymous			Other		There's so many people that have dogs. Why can't a section be included for a dog park? There has been different opportunities for a dog park, many times and every single time this subject has been turned down for YEARS by a certain town supervisor.	Live in Fox Crossing, Work	Issue
36	5/15/2018 21:42	Anonymous	jfbeson@gmail.com	1	Other		Dangerous Dropoff. Fence needed for safety.	Live in Fox Crossing	Issue
37	5/19/2018 13:34	May 15 Workshop			Other		Woodland restoration, small nature trails, maybe with ecosystem signage	Live in Fox Crossing	Opportunity
38	5/19/2018 13:35	May 15 Workshop			Other		Woodland restoration, small nature trails, maybe with ecosystem signage	Live in Fox Crossing	Opportunity
39	5/19/2018 13:35	May 15 Workshop			Other		Woodland restoration, small nature trails, maybe with ecosystem signage	Live in Fox Crossing	Opportunity
40	5/19/2018 13:36	May 15 Workshop			Other		Prairie restoration. Bee/butterfly habitat	Live in Fox Crossing	Opportunity
41	5/19/2018 13:38	May 15 Workshop			Other		Nature center/education/lectures 1. Restrooms 2. Small natural amphitheater 3. Rustic playground	Live in Fox Crossing	Opportunity
42	5/19/2018 13:38	May 15 Workshop			Other		Parking areas	Live in Fox Crossing	Opportunity
43	5/19/2018 13:40	May 15 Workshop			Other		Area with rock and concrete fill - maybe create a trail/track for mountain biking (non-motorized)	Live in Fox Crossing	Opportunity
44	5/19/2018 13:51	May 15 Workshop		1	Other		Keep the woods area as it currently is. Just keep the trails maintained. It is full of wonderful large trees and lots of birds. Great to snowshoe through in the winter.	Live in Fox Crossing	Issue
45	5/19/2018 13:52	May 15 Workshop			Other		Keep this area as is and let the trees grow. Some trails would be OK. A lot of birds live in this area	Live in Fox Crossing	Issue
46	5/19/2018 13:53	May 15 Workshop			Other		A trail up this artificial hill would be nice. It adds a nice aerobic addition to hikes in this park	Live in Fox Crossing	Opportunity
47	5/19/2018 13:56	May 15 Workshop			Other		Hardwood trees around agricultural field perimeter. Now so they can grow. Where walking trail would be located.	Live in Fox Crossing	Issue
48	5/19/2018 13:57	May 15 Workshop			Other		Where walking trail would be located.	Live in Fox Crossing	Issue
49	5/19/2018 13:57	May 15 Workshop			Other		Hardwood trees around agricultural field perimeter. Now so they can grow. Where walking trail would be located.	Live in Fox Crossing	Issue
50	5/19/2018 13:57	May 15 Workshop			Other		Hardwood trees around agricultural field perimeter. Now so they can grow. Where walking trail would be located.	Live in Fox Crossing	Issue

51	5/19/2018 14:02	May 15 Workshop				Other	Teaching - teach (by example and signage) How to manage our backyards to reduce greenhouse gasses - low/no mow - etc....How to encourage wildlife without encouraging pests	Live in Fox Crossing	Opportunity
52	5/19/2018 14:03	May 15 Workshop			Other	Leave trees as is	Live in Fox Crossing	Opportunity	
53	5/19/2018 14:03	May 15 Workshop			Other	Prairie restoration	Live in Fox Crossing	Opportunity	
54	5/19/2018 14:08	May 15 Workshop			Other	Prairie restoration is a must here	Live in Fox Crossing	Opportunity	
55	5/19/2018 14:10	May 15 Workshop			Other	Hiking trails, keep woods. Natural.	Live in Fox Crossing	Opportunity	
56	4/26/2018 15:57	Anonymous	2		Built Structure	I'd like to see a pavilion	Live in Fox Crossing	Issue	
57	4/26/2018 19:01	Jason Weber	4	1	Built Structure	It’d be nice to have an amphitheater to host an annual village event along with other entertainment possibilities.	Other	Opportunity	
58	4/26/2018 19:01	Jason Weber	2		Built Structure	It’d be nice to have an amphitheater to host an annual village event along with other entertainment possibilities.	Other	Opportunity	
59	4/30/2018 13:57	Anonymous	3	1	Built Structure	I would love a community pool!	Live in Fox Crossing	Opportunity	
60	5/9/2018 12:02	Anonymous	2		Built Structure	A simple and small space for outdoor workout equipment structures would be nice and promote health in the community. A bench like structure for steps, place for sit ups or ab work, pull up bar, etc. See the image for ideas.	Live in Fox Crossing	Opportunity	
61	5/15/2018 17:04	Anonymous			Built Structure	make space for a fully functional park and rec office and maintenance shop.	Live in Fox Crossing	Opportunity	
62	5/22/2018 10:33	Anonymous			Built Structure	A small natural amphitheater & amp;/or pavilion with restrooms for education speakers, musicians, events like farmers market or local art fairs. Small venues only, keeping the natural beauty of the area in mind.	Live in Fox Crossing	Issue	
63	5/19/2018 13:44	May 15 Workshop			Built Structure	Parking	Live in Fox Crossing	Issue	
64	5/19/2018 13:44	May 15 Workshop			Built Structure	Hiking trails	Live in Fox Crossing	Issue	
65	5/19/2018 13:45	May 15 Workshop	1		Built Structure	Hiking trails and prairie restoration	Live in Fox Crossing	Issue	
66	5/19/2018 13:45	May 15 Workshop			Built Structure	Hiking trails and prairie restoration	Live in Fox Crossing	Issue	
67	5/19/2018 13:46	May 15 Workshop			Built Structure	Hiking trails	Live in Fox Crossing	Issue	
68	5/19/2018 13:47	May 15 Workshop			Built Structure	Pond for wildlife	Live in Fox Crossing	Issue	
69	5/19/2018 13:47	May 15 Workshop			Built Structure	Prairie	Live in Fox Crossing	Issue	
70	5/19/2018 14:04	May 15 Workshop			Built Structure	Community Center Building	Live in Fox Crossing	Opportunity	
71	5/19/2018 14:07	May 15 Workshop	1		Built Structure	Pavilion. Parking. Changing room. Bathroom.	Live in Fox Crossing	Opportunity	
72	5/19/2018 14:08	May 15 Workshop			Built Structure	Bike facilities are important. Restrooms particularly	Live in Fox Crossing	Opportunity	
73	4/18/2018 9:17	Anonymous			Park Activities	I would like to see a lawn area for larger community gatherings	Work in Fox Crossing	Opportunity	
74	4/26/2018 21:21	Anonymous	17		Park Activities	I would love a dog park!	Live in Fox Crossing	Opportunity	
75	4/26/2018 21:28	Chris Taylor	18		Park Activities	With 64 acres it would be a missed opportunity not have a dog park somewhere at this location!	Live in Fox Crossing	Opportunity	
76	4/29/2018 19:57	Anonymous	4		Park Activities	Would love to see a dog park!	Travel to Fox Crossing O	Opportunity	
77	4/30/2018 13:59	Anonymous	1		Park Activities	Splash Pad for kids, and dog park	Travel to Fox Crossing O	Opportunity	
	4/30/2018 13:59	Anonymous	1		Park Activities	Splash Pad for kids, and dog park	Travel to Fox Crossing O	Opportunity	
	4/30/2018 13:59	Anonymous	1		Park Activities	Splash Pad for kids, and dog park	Travel to Fox Crossing O	Opportunity	
	4/30/2018 14:22	Jason Patzwald	2		Park Activities	Would be great to have a dog park and walking trails.	Live in Fox Crossing	Opportunity	
	4/30/2018 21:15	Anonymous	1		Park Activities	Accessible nature trails, splash pad, natural playground, wooded area, free disc golf, snowshoeing trails, nature center, observation tower, native WI animal habitats/zoo	Live in Fox Crossing	Opportunity	
	5/3/2018 14:31	Anonymous			Park Activities	A splash pad would be an amazing addition to this park. Would also love to have a swing set nearby!	Live in Fox Crossing	Opportunity	

	5/8/2018 10:24	Anonymous					Park Activities	Would hate to live in this nice quiet neighborhood. Oh wait I do... What will you do to keep noise down? Tons of little kids here, and pools and amphitheaters are EXTREMELY LOUD!! Sure hope you wouldn't put a "car" entrance to the park off of Allison DR... Would be a terrible idea for those who live in neighborhood.	Live in Fox Crossing	Issue
	5/9/2018 11:43	Anonymous				10	Park Activities	Splash pad, walking trails and a more "natural" playground using logs, tree stumps and other nature elements as part of a playground.	Live in Fox Crossing	Issue
	5/9/2018 12:14	Tim Baumann	timbaumant6@yahoo.com			1	Park Activities	I hope this park is considered to stay a natural environment, or a partially natural environment. Not everything in the village needs to be "developed" into lawn, concrete, and pavement. For example some non paved walking and or off road biking trails would go a long way and would preserve a natural habitat for wildlife. Whatever is done with the park I hope the village considers the long term upkeep costs for the proposed plan. The long term upkeep costs need to be affordable for the village. I would love to see a splash pad for kids!	Live in Fox Crossing	Issue
	5/9/2018 13:00	Anonymous				1	Park Activities	Would like to ensure that the proposed park maintains the safety and and noise standards for the neighboring residential properties. Traffic on CB has dramatically increased and only expect it to get busier already.	Live in Fox Crossing	Issue
	5/9/2018 18:16	Anonymous				1	Park Activities	Would like to ensure that the proposed park maintains the safety and and noise standards for the neighboring residential properties. Traffic on CB has dramatically increased and only expect it to get busier already.	Live in Fox Crossing	Issue
	5/9/2018 18:16	Anonymous				2	Park Activities	Natural hiking paths and mountain bike trails! These are low maintenance items and fit naturally in the landscape. Keep the area low impact to minimize impact to neighborhood and wildlife.	Live in Fox Crossing	Issue
	5/14/2018 20:23	Randy Apa				7	Park Activities	Excellent location for a dog park - borders quarry, woods, HWY...now homes	Live in Fox Crossing	Opportunity
	5/15/2018 15:23	Jackie Weninger	jackieweninger@gmail.			2	Park Activities	Utilize this crummy area as a single track mountain bike trail - the junk there will be useful rather than expensive to move	Live in Fox Crossing	Opportunity
	5/19/2018 13:19	May 15 Workshop					Park Activities	Trails for snowshoeing. Walking paths. Family - pets. Less of sports options. Need parking to handle large events so no parking on streets	Live in Fox Crossing	Opportunity
	5/19/2018 13:32	May 15 Workshop					Park Activities	The west side needs a dog park badly. Doesn't have to be big, but a place for dogs to run around off the leash	Live in Fox Crossing	Opportunity
	5/19/2018 13:33	May 15 Workshop					Park Activities	This area should be developed as a native prairie. You could work with an organization such as Wild Ones in the Village to help with this	Live in Fox Crossing	Issue
	5/19/2018 13:42	May 15 Workshop					Park Activities	Mountain bike trail area. Green perimeter trail. Weaving multi-use trail. Winter fat biking.	Live in Fox Crossing	Issue
	5/19/2018 13:43	May 15 Workshop					Park Activities	Mountain bike skills area. Pump track. Features. Rock garden.	Live in Fox Crossing	Issue
	5/19/2018 13:49	May 15 Workshop					Park Activities	Single track bike trail for mountain biking and hiking. Make it a destination for biking persons as there is little in the area.	Live in Fox Crossing, Trav	Opportunity
	5/19/2018 13:58	May 15 Workshop					Park Activities	I would love to see a disc golf course added	Live in Fox Crossing, Trav	Opportunity
	5/19/2018 14:06	May 15 Workshop					Park Activities	I would love to see a disc golf course added	Live in Fox Crossing, Trav	Opportunity
	5/19/2018 14:07	May 15 Workshop				1	Park Activities	I would love to see a disc golf course added	Live in Fox Crossing, Trav	Opportunity
	5/19/2018 14:10	May 15 Workshop					Park Activities		Live in Fox Crossing, Trav	Opportunity
	10/29/2018 12:51	Anonymous	wisk8r@gmail.com				Park Activities		Live in Fox Crossing, Trav	Opportunity
	10/29/2018 12:51	Anonymous	wisk8r@gmail.com				Park Activities		Live in Fox Crossing, Trav	Opportunity
	10/29/2018 12:52	Anonymous	wisk8r@gmail.com				Park Activities		Live in Fox Crossing, Trav	Opportunity

Public Workshop 5.15.2018

Below are the top 20 items we heard from the workshop that the attendees would like to see in the master plan based on the visual preference survey. Vote totals correspond to overall ranking regardless of what category they are within.

Building

- Restrooms/Pavilions (18 votes)
- Picnic Shelters (10 votes)
- Nature Center (6 votes)

Components

- Trail Network (74 votes)
 - Hiking Trails
 - Nature Boardwalk
 - Cross Country skiing
 - Snowshoeing
 - Trailhead
- Prairie/woodland Restoration (28 votes)
 - Wildlife Viewing
- Amphitheater Lawn (23 votes)
 - Yoga in the Park
 - Movies in the park
 - Dancing in the Park
- Dog Park (18 votes)
- Mountain Biking (18 votes)
- Farmers Market/Art Fair (18 votes)
- Splash Pad (15 votes)
- Archery (11 votes)
- Ice Skating (8 votes)
- Sledding (7 votes)
- Public Art (6 votes)
- Athletic Fields (6 votes)
 - Soccer
 - Baseball
 - football
- High Ropes Course (5 votes)
- Maple Syrup (Sugar Shack) (5 votes)
- Nature Playground (5 votes)
 - Sand and water play
- Outdoor Fireplace (5 votes)
- Pump Track (4 votes)

PRC Meeting 4.11.2018

From this meeting a list of visioning ideas were formulated in the bullets below. These are elements that were expressed to keep in mind and to incorporate into the design process.

General Character

- Nature as common denominator
- Natural history education
- Cross country and walking trails
- Lawn area
- Park as “on the map” identity
- “Different than all other parks.”
- Attract younger generation users
- Go to “do something”

Events and Programming

- Amphitheater as a destination
- Community gatherings
- Nature playground
- Pottery, wildlife, classes, programming, natural sciences
- Activities
- Music
- Fireworks
- Art/mural component – historical perspective

Building

- Park Pavilion/Community Building

Infrastructure

- Keep Secura employees, future residential development in mind
- Pedestrian bridge
- Gateway treatments
- Car centric or leave your cars at the edge and walk/bike in

Components

- Fireplace
- Skating rink
- High ropes / ropes course
- Splash pad
- Biking, active
- Mountain biking
- Climbing tower

Staff Meeting 4.11.2018

From this meeting a list of visioning ideas were formulated in the bullets below. These are elements that were expressed to keep in mind and to incorporate into the design process.

General Character

- Create a Destination; a focal point and identity of the community
- Activities are important
- Balance of fields, nature
- Event attraction

Events and Programming

- Shakespearean plays
- Events
- Movies in the park
- Rentals, events, education. See Brookfield, Wis example
- Farm markets, car shows
- Tournament space is lacking in Fox Cities
- daily attractions

Building

- 4 season pavilion, community center
- Development of Community Building at intersection of CB & Shady Lane

Infrastructure

- Place, venue for community events, celebrations
- Parking and supplemental parking must be addressed, opportunity to collaborate with Secura on parking supply
- Factor in future reconstruction of Shady Lane, will include trail, resulting in good connectivity
- bike/ped access from most neighborhoods on west side
- Stormwater pond along Shady Lane proposed for next 5 year plan
- Long term access point to park
- Pedestrian access to park
- Utility infrastructure to host outdoor events

Components

- Amphitheater
- Performance space, stage with power, restroom, limited facilities
- Soccer, other uses could be partially paid for through room tax funds

CORP/Comprehensive Plan

The following elements were highlighted within the Comprehensive Outdoor Recreational Plan and the Village Comprehensive Plan as components of a Community Park.

- Trails
- Sports Fields
- Family Park Services
- Open Space
- Multi-Modal/Vehicular Connections
- Large Event Space
- Swimming Pool



Building a Better World
for All of Us®

MEMORANDUM

TO: Amanda Geiser
FROM: Molly Wagner
DATE: June 15, 2018
RE: Woodland Prairie Park Alternatives
SEH No. 145983 14.00

The attached alternatives offer three distinct approaches to vehicular access, but all focus on preserving and enhancing the natural features of the park.

The intent of these alternatives is to get feedback from the PRC and Fox Crossing community on the type of access and identify the preferred big picture programming components, before focusing in on the details, such as the items on the PRC approved program element list.

Option A: Nature Stations

- Access drive off Shady Lane with parking lot in current maintenance yard
- Trail network throughout the site, with pedestrian bridge connection to CB trail and Secura development (with potential for parking partnership for larger events)
- Landform near existing stockpile to provide exercise, viewpoint, sledding hill, and pedestrian bridge landing.
- Pedestrian connections to Allison Drive and future housing development to the east
- Build sidewalk along north side of Shady Lane
- Mountain bike trail network shown in marginal woodland along CB
- Community building/pavilion nestled into the existing grove of deciduous trees, spill out event space in grove to north.
- Park structures (Kiosks, picnic shelters, etc) located throughout the park in different habitats provide “nature stations” and opportunity for interpretive education
- Plaza at corner of CB and Shady Lane
- Preservation of high quality woodlands, selective removal of marginal woodlands, and tree buffer planting along eastern and southern property lines
- Convert majority of agricultural fields and a portion of marginal woodland to prairie
- Open lawn area to east of community building for informal programmable space
- Stormwater quality and habitat pond at the low point of site.
- Playground to east of community building, with potential to include splash pad.
- Adventure playground to north of community building to encourage nature and unstructured play

Option B: Art Park

- Access drive off CB at roundabout and right-in, right-out access south of the roundabout
- Trail network throughout the site, connecting a series of sculptures and public art installations, similar concept to Stevens Point Sculpture Park
- Pedestrian connections to Allison Drive and future housing development to the east
- Build sidewalk along north side of Shady Lane
- Building location takes advantage of sight lines from both directions along CB and optimizes views to remnant woodlands and new prairie
- Plaza and gathering spaces
 - o Entry plaza at CB and Shady Lane: provides a presence to the intersection and long view to prairie landform
 - o Plaza along prairie loop path could include an arbor shade structure
 - o Plaza atop prairie landform provides overlook to park, with sculptural focal point
 - o Formal amphitheater and stage built into prairie landform
- Preservation of high quality woodlands, selective removal of marginal woodlands, and tree buffer planting along eastern and southern property lines
- Convert majority of agricultural fields and a portion of marginal woodland to prairie
- Open lawn areas to be focused around building and parking area and drive
- Stormwater quality and habitat pond at the low point of site.
- Playground, splash pad, and nature playground focused around building area

Option C: Parkway

- Vehicular access off Shady Lane, and roundabout, with future connection to Sand Point Ridge
- Provides maximum vehicular access to all parts of the park, parking provided along parkway
- Pedestrian connections to Allison Drive and future housing development to the east
- Build sidewalk along north side of Shady Lane
- Trail network within the park to highlight unique mix of habitats
- Selective clearing of conifer tree farm to frame community building from intersection of CB and Shady Ln.
- Picnic shelter in the conifer tree farm
- Preservation of high quality woodlands, selective removal of marginal woodlands, and tree buffer planting along eastern and southern property lines
- Convert majority of agricultural fields to prairie
- Open lawn north of community building provides informal lawn amphitheater for pavilion stage
- Playground and splash pad near community building
- Nature playground and/or adventure playground in grove of deciduous trees

MGW










Attachments: 6.21.2018 Program Evaluation sheets.pdf, Notated renderings_6.21.18.pdf

C:

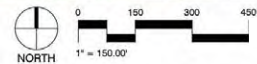
p:\fj\foxcr\145983\8-planning\alternatives draft 06.01.18\alternatives memo_2018.06.15.docx



LEGEND

-  Vehicular Access and Parking
-  Pedestrian Access
-  Structures
-  Plazas/Formal Gathering Spaces
-  Woodland
-  Prairie
-  Open Lawn
-  Pond
-  Bridge

1. Plaza
2. Community Building
3. Parking
4. Mountain Biking
5. Outdoor Classroom
6. Event Lawn
7. Walking Trails
8. Park Structure
9. Pedestrian Bridge
10. Water Feature
11. Playground



MASTER PLAN ALTERNATIVES - OPTION A - "NATURE STATIONS"
 2018 WOODLAND PRAIRIE PARK MASTER PLAN
 June 21, 2018

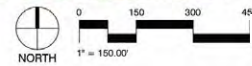




LEGEND

- Vehicular Access and Parking
- Pedestrian Access
- Structures
- Plazas/Formal Gathering Spaces
- Woodland
- Prairie
- Open Lawn
- Pond
- Public Art

- 1. Plaza
- 2. Community Building
- 3. Parking
- 4. Public Art
- 5. Landform Feature
- 6. Prairie
- 7. Walking Trails
- 8. Playground and Splash Pad
- 9. Formal Amphitheater
- 10. Water Feature



MASTER PLAN ALTERNATIVES - OPTION B - "ART PARK"
 2018 WOODLAND PRAIRIE PARK MASTER PLAN
 June 21, 2018

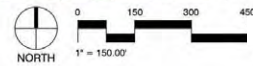




LEGEND

- Vehicular Access and Parking
- Pedestrian Access
- Structures
- Plazas/Formal Gathering Spaces
- Woodland
- Prairie
- Open Lawn
- Pond

1. Plaza
2. Community Building
3. Parking
4. Park Structure
5. Event Lawn
6. Prairie
7. Walking Trails
8. Playground
9. Adventure Playground
10. Water Feature



MASTER PLAN ALTERNATIVES - OPTION C - "PARKWAY"
 2018 WOODLAND PRAIRIE PARK MASTER PLAN
 June 21, 2018



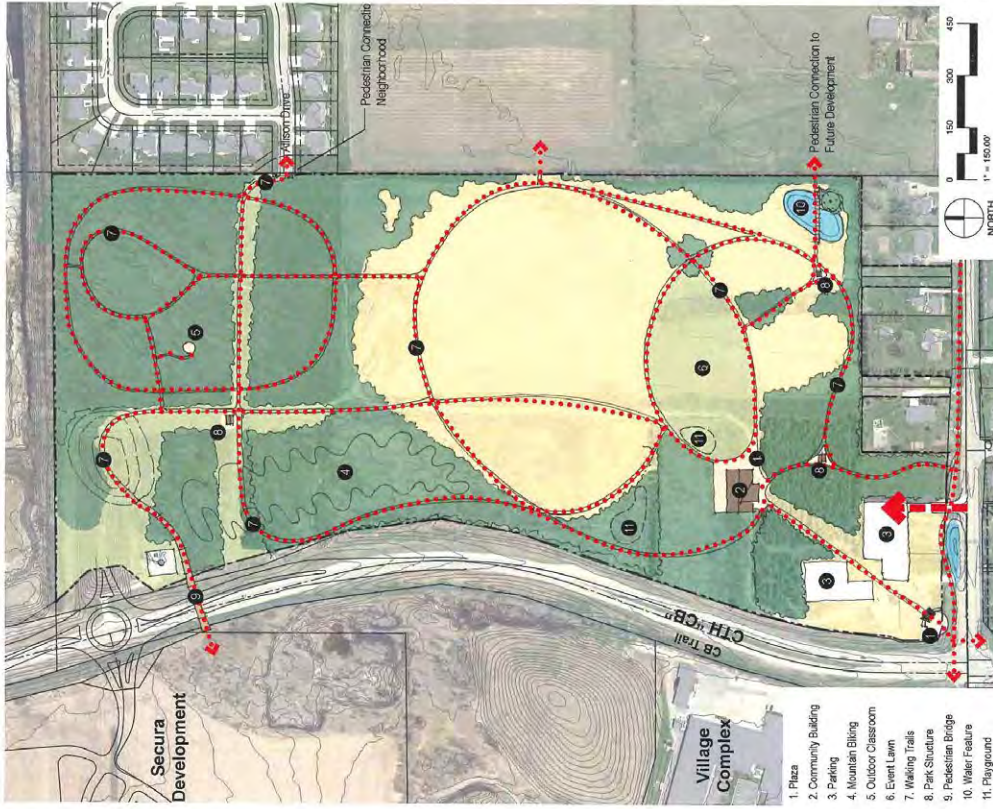
Summer Safety Night 6.21.18

Opportunity for Public Feedback

The three alternative options were on display at the Village's Summer Safety Night event to elicit public feedback. Attendees were encouraged to vote on their favorite option and to provide written feedback. SEH staff was on hand to answer questions regarding each alternative option and the design process.



###



Exercise No. 3:
Preferred Alternative
Place a tally mark in the gray box if this is the alternative you prefer.

Program Components	Priority Level		
	Low	Medium	High
Community Identity			
Central Community Gathering Space			
Nature Preservation and Restoration			###
Playgrounds			###
Multi-Generational		==	==
Active Recreation			###
Passive Recreation (Trails)			###
Art			
Parking			
Pedestrian/Bike Access			###
Vehicle Access	###		
Parks and Recreation Programming			
Community Building/Pavilion (Event/Rental Space)			←

Exercise No. 2: Highest Priority Item
Use a tally mark to indicate what you feel is the highest priority program component for this alternative.

Exercise No. 1: Program Priorities
Tallies show how important each program component is to you by placing a tally mark in the matrix next to each item listed above.

MASTER PLAN ALTERNATIVES - OPTION A - "NATURE STATIONS"
2018 WOODLAND PRAIRIE PARK MASTER PLAN
June 21, 2018





Project: **A**
Subject: _____
Date: _____ By: _____ SEH #: _____
Checked by: _____ Date: _____ Office: _____ File #: _____
Sheet No: _____ Of: _____

- Keep nature base incorporate a petting zoo.
community building = nature center

like the bridge connection

Love this!

Trees

Playground

by the fire station on 41 (likes that playground a lot.)

4 square. Gagaball

open area to fly a kite.
spiderweb climber

Even more Mtn Bike Trails!

Playground

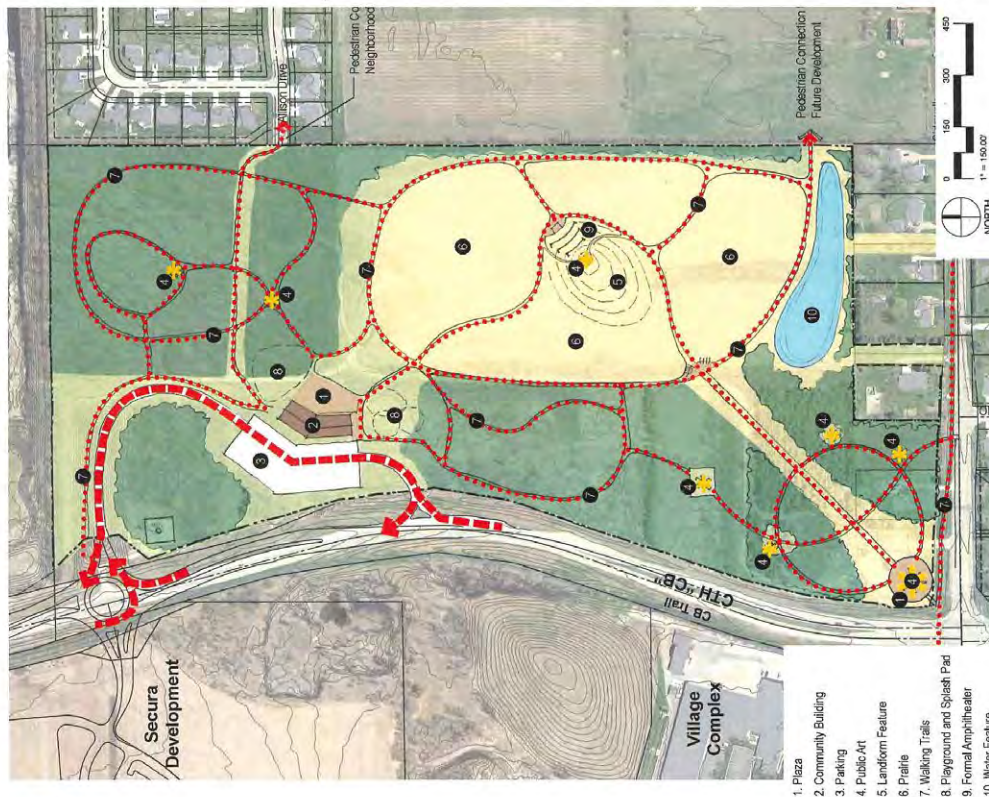
Mountain Biking

Dog Park (even just 1 acre) and lots of walk/run paths

Love this!

Splash Pad and bike trails

Splash pad, nature, Bike trails!



Program Components	Priority Level		
	Low	Medium	High
Community Identity	I	II	III
Central Community Gathering Space		I	IIII
Nature Preservation and Restoration		II	IIII
Playgrounds	II		III
Multi-Generational		II	
Active Recreation	I	II	
Passive Recreation (Trails)		IIII	
Art	II	II	II
Parking	II		
Pedestrian/Bike Access	I		II
Vehicle Access	II		I
Parks and Recreation Programming		II	
Community Building/Pavilion (Event/Rental Space)		I	III

Exercise No. 2: Highest Priority Item
 Use a tally mark to indicate what you feel is the highest priority program component for this alternative.

Exercise No. 3: Preferred Alternative
 Place a tally mark in the gray box if this is the alternative you prefer.

Exercise No. 4: Program Priorities
 Tell us how important each program component is to you by placing a tally mark in the matrix next to each item listed above.

MASTER PLAN ALTERNATIVES - OPTION B - "ART PARK"
 2018 WOODLAND PRAIRIE PARK MASTER PLAN
 June 21, 2018



B.



Project: _____
Subject: _____
Date: _____ By: _____ SEH #: _____
Checked by: _____ Date: _____ Office: _____ File #: _____
Sheet No: _____ Of: _____

GREAT AMPHITHEATER, GREAT ENTRANCE & EXITS
steer clear of CB access, other than @ roundabout
Move amphitheatres closer to parking for elderly access.
Path material?
Ponds will require blasting - really expensive.

NO Amphitheater!

Move splashpad away from houses

Please no amphitheater - too bright & loud
move splash pad and theater

Love splashpad!

my favorite design

Keep Amphitheater!

likes the amphitheater. pierce park isn't programmed.

TRAVELING art shows.

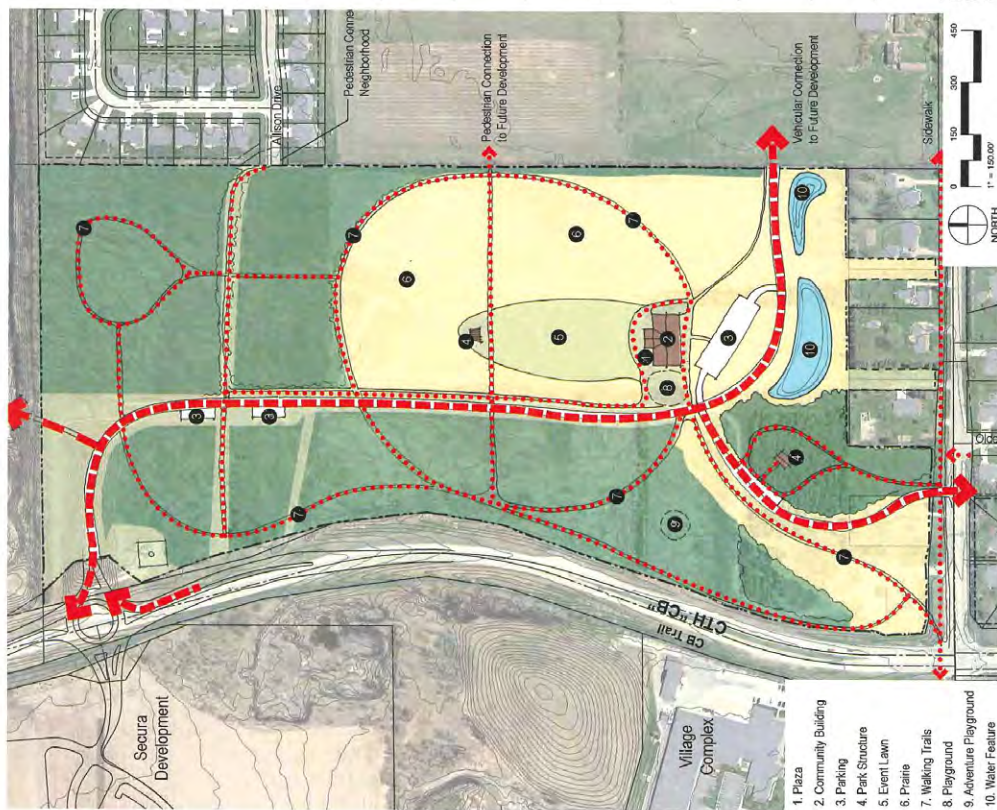
Love the amphitheater.

Add Mt. Bike Trails

Dog Accessible

Existing park trees in pond area

Art is a waste of tax money



Exercise No. 3:
Preferred Alternative
 Place a tally mark in the gray box if this is the alternative you prefer.

Program Components	Priority Level		
	Low	Medium	High
Community Identity		1	
Central Community Gathering Space		2	
Nature Preservation and Restoration		2	
Playgrounds		2	
Multi-Generational	1		
Active Recreation	1		
Passive Recreation (Trails)			2
Art		1	
Parking		1	
Pedestrian/Bike Access			2
Vehicle Access			2
Parks and Recreation Programming	1		
Community Building/Pavilion (Event/Rental Space)			2

Exercise No. 2: Highest Priority Item
 Use a tally mark to indicate what you feel is the highest priority program component for this alternative.

Exercise No. 1: Program Priorities
 Tell us how important each program component is to you by placing a tally mark in the matrix next to each item listed above.

MASTER PLAN ALTERNATIVES - OPTION C - "PARKWAY"
 2018 WOODLAND PRAIRIE PARK MASTER PLAN
 June 21, 2018



C,



Project: _____
Subject: _____
Date: _____ By: _____ SEH #: _____
Checked by: _____ Date: _____ Office: _____ File #: _____
Sheet No: _____ Of: _____

Dont allow Driving thru-whole park
No driving through Park
Limit roads thru park

likes head in parking.

Good Parking

Take down 'Prayer to the Woods' sign

Fox Crossing Woodland Prairie Park Conceptual Master Plan
PRC Master Plan Preferred Concept Presentation Meeting Summary
August 08 2018

Participants: See Village's Official Meeting Minutes

1. Review of Project to Date

- a. Reviewed status of the Stakeholder Engagement Plan
- b. Meeting notes from PRC and Staff Kickoff meetings, Public workshop
- c. Reviewed Project Assumptions and Program Elements
- d. Presented Concept alternatives as well as public feedback from Summer Safety Night.
 - i. Public preferred Concept Alternative A.
 - ii. High priority levels were indicated for the following Concept A program components: Nature Preservation and Restoration, Playgrounds, Active Recreation, Passive Recreation (trails), and Pedestrian/Bike Access
 - iii. Amphitheater is polarizing; some love the idea, many worried about noise pollution and the direction and location of amplified noise

2. Presentation and Discussion of Preferred Concept

- a. Discussed potential meeting with Secura to provide feedback on park planning.
- b. Art in the Park: PRC liked idea of including art at plazas, major trail intersections, within the walnut grove, and as distance markers
 - i. Potential for interactive art
- c. Community building – programming opportunities discussed include rentable event space, restrooms, offices, classrooms, warming shelter
- d. Amphitheater –
 - i. Large event space - concern expressed over projecting noise to the neighborhood to the east
 - ii. Woodland buffers will help alleviate some of the noise
 - iii. Large events/concerts will likely be limited to a few times a year
 - iv. Smaller events can be held in the walnut grove, directing noise toward CTH CB
- e. Zip Line and Ropes Course (Adrenaline based activities) could coexist with the mountain biking in the western woods.
 - i. Precedents: Toledo Zoo and New Zoo in Green Bay
- f. Increased park maintenance needs with the development of Woodland Prairie park
- g. Parking quantities
 - i. Designed: 180 stalls
 - ii. Don't need parking for large events since parking could be shared with municipal building, and possible partnership with Secura
- h. Trail distances
 - i. Mark interval distances, possibility with art installation
 - ii. Map distances
 - iii. No set distances for loops
- i. Definition of "Major Events": less than 5,000
 - i. Park is large and could easily absorb a large gathering
 - ii. Major Events require approval by the PRC

- j. Alternative Energy
 - i. Incorporate solar and vertical wind turbines
- k. Reorganization of Guiding principles:
 - i. Provide unique opportunities which are not found elsewhere in the Village
 - ii. Function as a neighborhood park, community park, and destination park to bring people to the community
 - iii. The park should establish a strong identity for the Village
 - iv. The park should accommodate larger, community-wide events and gatherings
 - v. The park should include a community building or pavilion
 - vi. Preserve significant natural resources
 - vii. Park programming should be done with respect to the neighbors, including noise safety, and other concerns
 - viii. The park should be multi-functional, providing a broad range of activities and programs to meet the needs of the entire community
 - ix. Provide good trail access to and throughout the park from multiple directions
 - x. Create a destination, attracting families to the area
 - xi. Incorporate sustainable design features including renewable energy
- l. PRC endorsed the following guiding principles
 - i. Provide unique opportunities which are not found elsewhere in the Village
 - ii. Preserve significant natural resources
 - iii. Function as a neighborhood park, community park, and destination park to bring people to the community
 - iv. Park programming should be done with respect to the neighbors, including noise safety, and other concerns
 - v. The park should establish a strong identity for the Village
 - vi. The park should be multi-functional, providing a broad range of activities and programs to meet the needs of the entire community
 - vii. The park should accommodate larger, community-wide events and gatherings
 - viii. Provide good trail access to and throughout the park from multiple directions
 - ix. Create a destination, attracting families to the area
 - x. The park should include a community building or pavilion
 - xi. Incorporate sustainable design features including renewable energy

3. Next Steps

- a. Amanda will verify with Jeff Sturgell, Village Manager on next steps, including how and when to engage the Village board
- b. SEH to present to Village Board and PRC the final master plan (revised per 8/8/18 PRC comments), cost estimates, phasing plan, and funding analysis.

Woodland Praire Park Conceptual Master Plan
Village of Fox Crossing, Wisconsin
PRELIMINARY OPINION OF PROBABLE CONSTRUCTION COST

Item	Unit	Total Quantity	Unit Cost	Total Cost
Phase 1: Gateway Buildout				
RELOCATE EXISTING MAINTENANCE SHED AND YARD (assumed to be in Village Maintenance Budget)	LS	1		
CONTRACTOR MOBILIZATION	LS	1	\$50,000.00	\$50,000.00
COMMUNITY BUILDING	SF	7500	\$200.00	\$1,500,000.00
PLAZA AND LANDSCAPE	LS	1	\$400,000.00	\$400,000.00
PLAYGROUND EQUIPMENT	LS	1	\$105,000.00	\$105,000.00
FITNESS STATIONS	LS	1	\$50,000.00	\$50,000.00
SAFETY SURFACING FOR PLAYGROUND AND FITNESS STATIONS (poured in place rubber surfacing)	SF	7000	\$15.00	\$105,000.00
SOUTH PARKWAY AND PARKING LOTS 1 & 2	LS	1	\$220,000.00	\$220,000.00
PARKING LOT LIGHTING	LS	1	\$75,000.00	\$75,000.00
SPLASH PAD (recirculating system)	LS	1	\$350,000.00	\$350,000.00
SKATING RIBBON (refrigerated system)	LS	1	\$100,000.00	\$100,000.00

SUBTOTAL	\$2,905,000.00
Design and Engineering (10%)	\$290,500.00
Construction Contingency (25%)	\$726,250.00
PHASE 1 TOTAL	\$3,921,750.00

Phase 2: Parkway Extension to Roundabout				
CONTRACTOR MOBILIZATION	LS	1	\$30,000.00	\$30,000.00
REMOVAL OF EXISTING LANDFORM (assumed to be funded through Street Department)	LS	1		\$0.00
NORTH PARKWAY AND PARKING LOTS 3 & 4	LS	1	\$275,000.00	\$275,000.00
PARKING LOT LIGHTING	LS	1	\$27,000.00	\$27,000.00
CONCRETE WALK (6')	SFT		\$7.00	\$0.00
BITUMINOUS TRAIL (10')	SFT		\$5.00	\$0.00
NATURE PLAYGROUND (tree climber, music, sculptures)	LS	1	\$85,000.00	\$85,000.00
ENGINEERED WOOD FIBER SAFETY SURFACING	CYD	203	\$25.00	\$5,075.00

SUBTOTAL	\$422,075.00
Design and Engineering (10%)	\$42,207.50
Construction Contingency (25%)	\$105,518.75
PHASE 2 TOTAL	\$569,801.25

Phase 3: Habitat Restoration				
CONTRACTOR MOBILIZATION	LS	1	\$20,000.00	\$20,000.00
CLEARING AND GRUBBING	ACRE	1.5	\$20,000.00	\$30,000.00
SOFT TRAILS (AGGREGATE)	LF	12173	\$55.00	\$669,515.00
CONCRETE SIDEWALK	LF	9873	\$50.00	\$493,650.00
TOPSOIL	CYS	300	\$35.00	\$10,500.00
PRAIRIE RESTORATION	SY	70083	\$2.25	\$157,686.75
WOODLAND RESTORATION	SY	28556	\$5.00	\$142,780.00
PRESERVE AND MAINTAIN EXISTING WOODLAND	AC	2.5	\$12,000.00	\$30,000.00
PEDESTRIAN BOLLARDS (located at path/parkway crossings)	LS	1	\$15,000.00	\$15,000.00
PRAIRIE CLEARING SHELTER	LS	1	\$60,000.00	\$60,000.00
WOODLAND COUNCIL RING	LS	1	\$15,000.00	\$15,000.00
LANDSCAPE	LS	1	\$50,000.00	\$50,000.00

SUBTOTAL	\$1,694,131.75
Design and Engineering (10%)	\$169,413.18
Construction Contingency (25%)	\$423,532.94
PHASE 3 TOTAL	\$2,287,077.86

Phase 4: Community Performance Space				
CONTRACTOR MOBILIZATION	LS	1	\$30,000.00	\$30,000.00
STAGE	LS	1	\$200,000.00	\$200,000.00
EVENT LAWN EARTHSCAPING	CYD	21775	\$28.00	\$609,700.00
EVENT LAWN LANDSCAPING	SY	6825	\$8.00	\$54,600.00
LANDSCAPE	LS	1	\$50,000.00	\$50,000.00
SUBTOTAL				\$944,300.00
<i>Design and Engineering (10%)</i>				<i>\$94,430.00</i>
<i>Construction Contingency (25%)</i>				<i>\$236,075.00</i>
PHASE 4 TOTAL				\$1,274,805.00

Phase 5: Adrenaline Areas Buildout				
MOUNTAIN BIKE TRAIL DEVELOPMENT & PUMP TRACK (asphalt paved pump track)	LS	1	\$205,000.00	\$205,000.00
SITE PREPARATION FOR TRAIL (GRUBBING)	AC	0.75	\$20,000.00	\$15,000.00
ROPES COURSE (costs range between \$30K - \$250K +)	LS	1	\$100,000.00	\$100,000.00
TRAILHEAD KIOSK	LS	1	\$15,000.00	\$15,000.00
SUBTOTAL				\$335,000.00
<i>Design and Engineering (10%)</i>				<i>\$33,500.00</i>
<i>Construction Contingency (25%)</i>				<i>\$83,750.00</i>
PHASE 5 TOTAL				\$452,250.00
SUBTOTAL				\$8,505,684.11

Phase 6: Pedestrian Bridge /CB Overpass				
PEDESTRIAN BRIDGE	LS	1	\$2,394,250.00	\$2,394,250.00
TRAIL CONNECTION TO PARK	LS	1	\$10,000.00	\$10,000.00
SUBTOTAL				\$2,404,250.00
<i>Design and Engineering (10%)</i>				<i>\$240,425.00</i>
<i>Construction Contingency (25%)</i>				<i>\$601,062.50</i>
PHASE 6 TOTAL				\$3,245,737.50
OVERALL PROJECT TOTAL				\$11,751,421.61

