

---

Town of Menasha  
**POLICE**  
Department

---



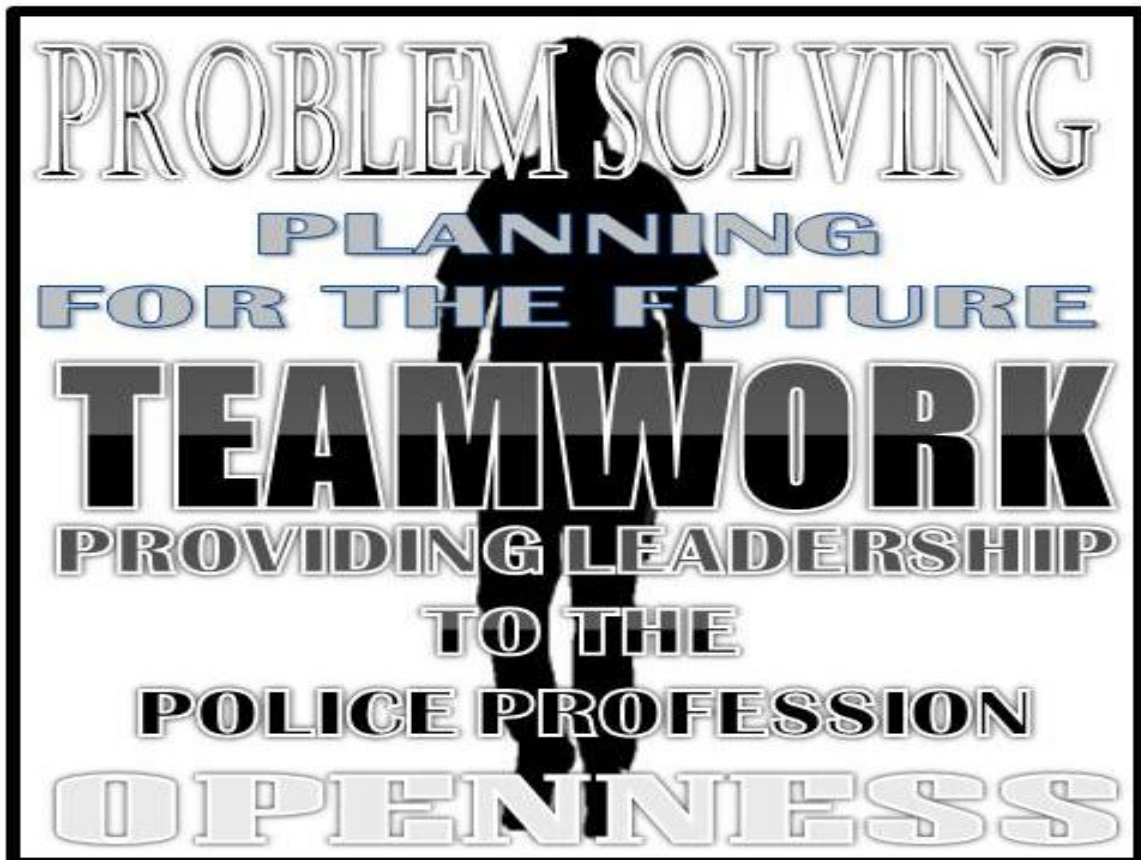
## 2014 Annual Report

---

# OUR MISSION

The Town of Menasha Police Department exists for the purpose of providing an enhanced level of public safety in the community, protecting the constitutional rights of all people, and improving the quality of life of each citizen.

# OUR COMMITMENTS



---

# TABLE OF CONTENTS

## INTRODUCTION

Message from the Chief .....	4
Organizational Chart.....	5
Staff.....	6
Community Overview.....	7

## AGENCY PROFILE

Administration .....	9
Patrol.....	10
Investigations.....	12
Community Policing.....	14
Support Services .....	16

## POLICE ACTIVITY

Calls for Service.....	19
Crimes and Arrests.....	21
Traffic Enforcement.....	22
Crime Comparison .....	23

---

# MESSAGE FROM THE CHIEF

I am pleased to present our 2014 Annual Report. I hope this report gives you insight into the operations and accomplishments of the Town of Menasha Police Department. We are committed to providing quality services to the citizens, businesses, and visitors of the Town of Menasha and to maintain the high quality of life our community deserves.

Law enforcement is unique in that services need to be provided 24 hours a day, seven days a week and 365 days a year. Many people think of police work as simply enforcing the law, however there is much more than that. Our officers are problem solvers and work very hard to resolve many issues that occur throughout the year without having to take any enforcement action. Another unique aspect of law enforcement is that success is sometimes measured by what doesn't happen! We are committed to reducing crime by being proactive. This is accomplished by developing partnerships with the community and having effective crime prevention programs in place.

I am proud of the wonderful work that the men and women of the Town of Menasha Police Department accomplish on an annual basis.

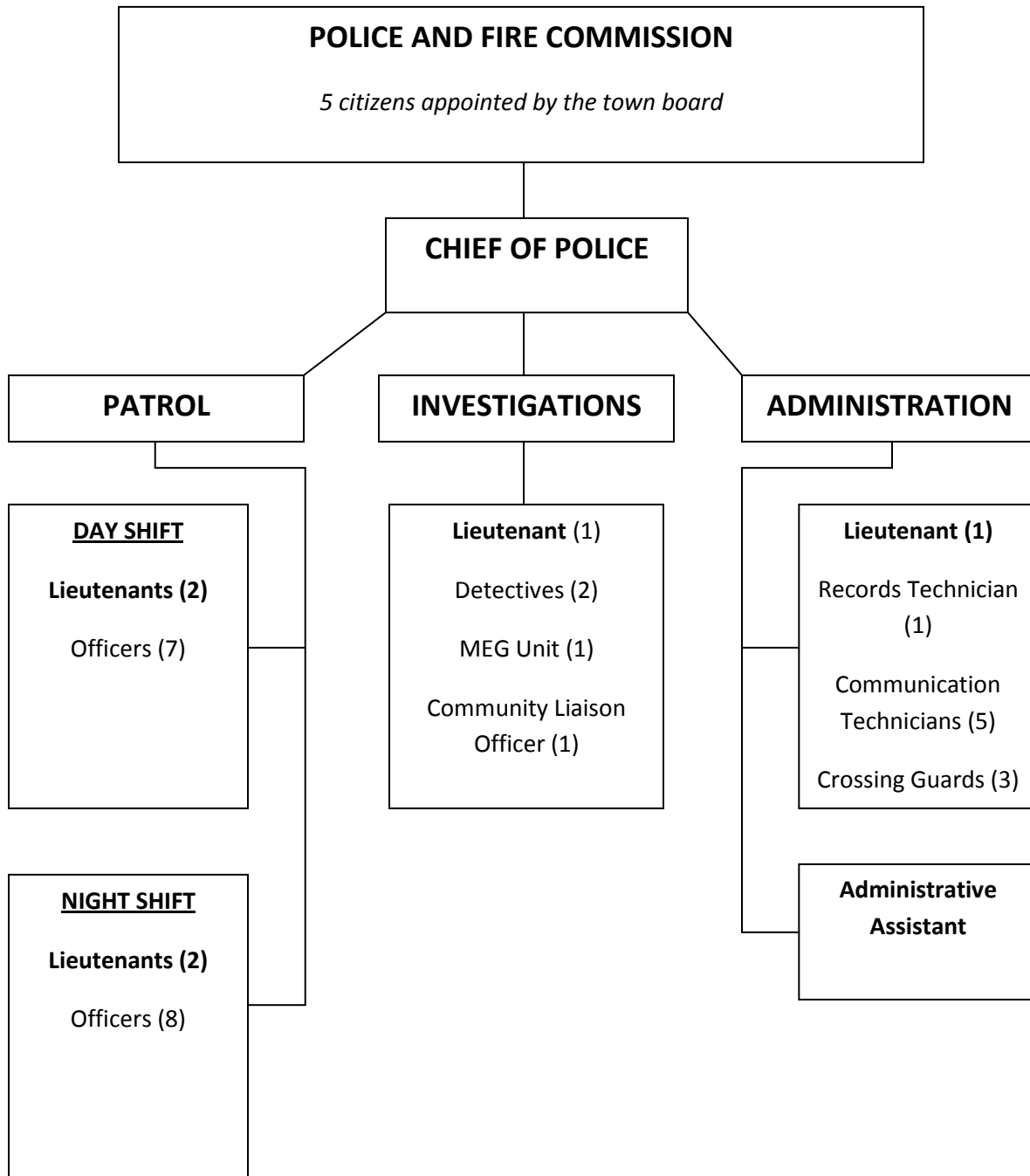
Quite clearly the public also recognizes and appreciates what we do as an organization. We know this from an ongoing citizen's survey that is given to persons that have contact with the Town of Menasha Police Department.

The Town of Menasha Police Department continues to face the challenge of providing quality services with limited resources. There is no doubt that the state of economy affects everyone. We are continually looking for innovative ways to improve efficiency so the same quality of services town residents expect and deserve can be maintained.

Finally, I would like to thank the citizens of the Town of Menasha for their continued support. It is through corroboration and cooperation that the community and the police department work together to keep our community a safe one. Although crime does occur in the Town of Menasha, one only needs to look at the crime comparisons to appreciate the safe community in which we live.

*Chief Rodney McCants*

# ORGANIZATIONAL CHART



# STAFF

## SWORN

### CHIEF OF POLICE

Rodney McCants

### ADMINISTRATIVE LIEUTENANT

Tim Seaver

### INVESTIGATIONS LIEUTENANT

Scott Blashka

### PATROL LIEUTENANTS

Rick Leneau

Pete DeBoer

Gary Cutler

Jason Severson

### DETECTIVES

Christopher Anderson

Jason Feucht

Tim Callan

### COMMUNITY LIAISON OFFICER

Jason Weber

### PATROL OFFICERS

Thomas Tralongo

Megan Hickey

Scott Boehlen

Michael Weinberger

Gerard Stephanie

Jeremiah Gustafson

Daniel Wiechman

Scott Farrell

John Swenson

Corey Colburn

Christopher LaSage

Evan Merkes

Seely Moe

Erwin Clay Davis

Christopher Brandt

## CIVILIAN

### ADMINISTRATIVE ASSISTANT

Sheri del Plaine

### RECORDS TECHNICIAN

Erin LeMahieu

### COMMUNICATIONS TECHNICIANS

Angela Oppor

Theresa Coenen

Christy Scott

JoAnn Richards

### CROSSING GUARDS

Jacquelyn Lovejoy

Lori Davis

Robert Birkholz

Stacy Plath

# COMMUNITY OVERVIEW

The Town of Menasha lies in the “Fox Cities” area of Wisconsin, near the northwest corner of Lake Winnebago, about thirty minutes southwest of Green Bay. The Town of Menasha has enjoyed steady growth for many years, and is presently the second largest township in Wisconsin with a population of 18,582.

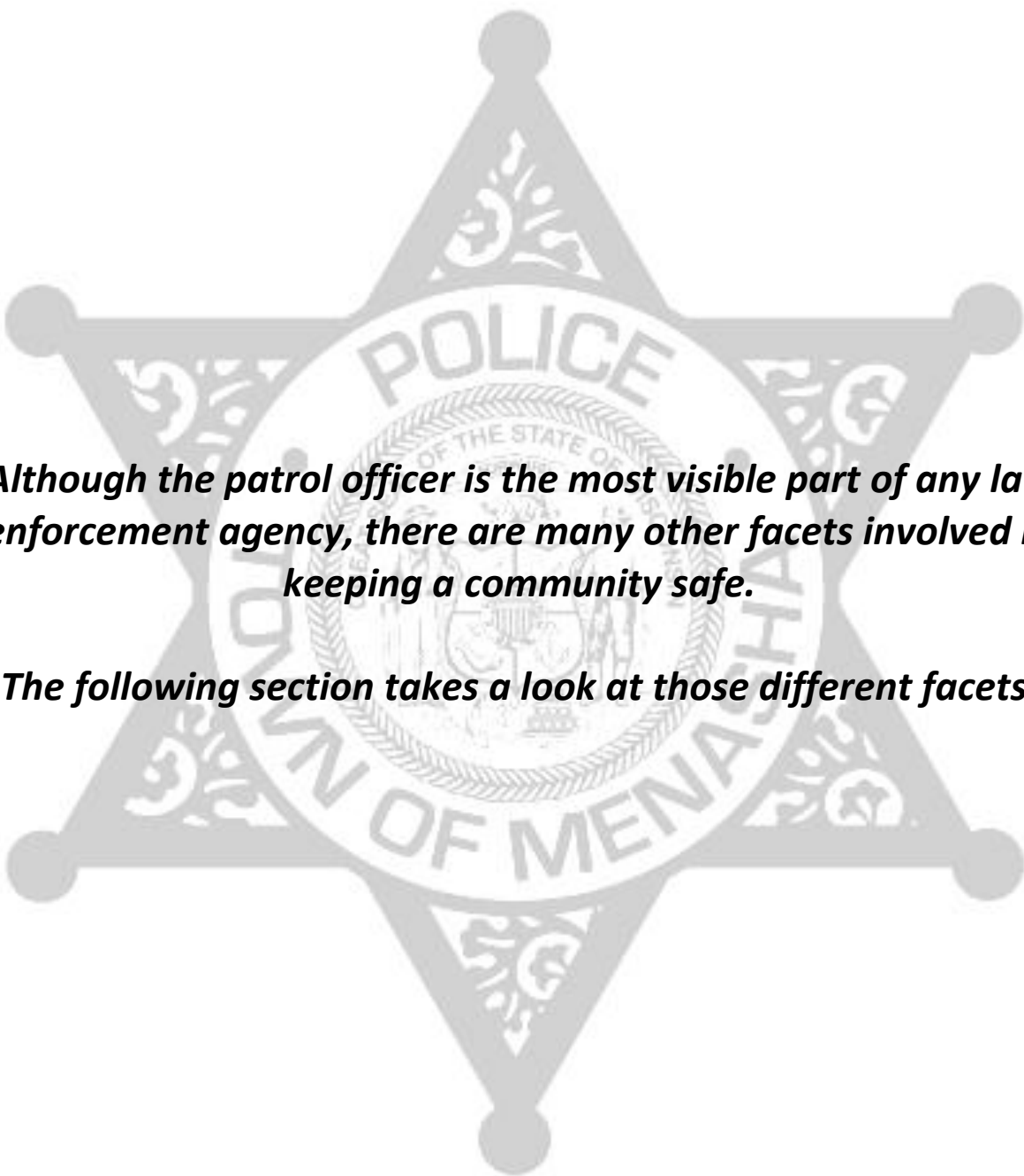
The Town of Menasha has a service area of 12.3 square miles that includes two major federal highways that intersect within those boundaries. Approximately 66,000 vehicles cross USH 10 each day, and another 91,000 vehicles travel on USH 41 each day. In addition, the Town of Menasha maintains approximately 100 miles of local roadways.

The Town of Menasha has a variety of zoning types within its jurisdiction, ranging from industrial/commercial to agricultural/residential. The economy of the area is based upon the paper industry and the Town is home to many large corporations including Pierce Manufacturing, Kimberly Clark, SCA Tissue, ClearWater, Miron Construction, Outlook Corp., Great Northern and many other great businesses.



---

# AGENCY PROFILE



***Although the patrol officer is the most visible part of any law enforcement agency, there are many other facets involved in keeping a community safe.***

***The following section takes a look at those different facets.***



# POLICE ADMINISTRATION

The administration division of the police department consists of the chief of police, administrative assistant and administrative lieutenant. This division is responsible for the coordination and direction of the department.

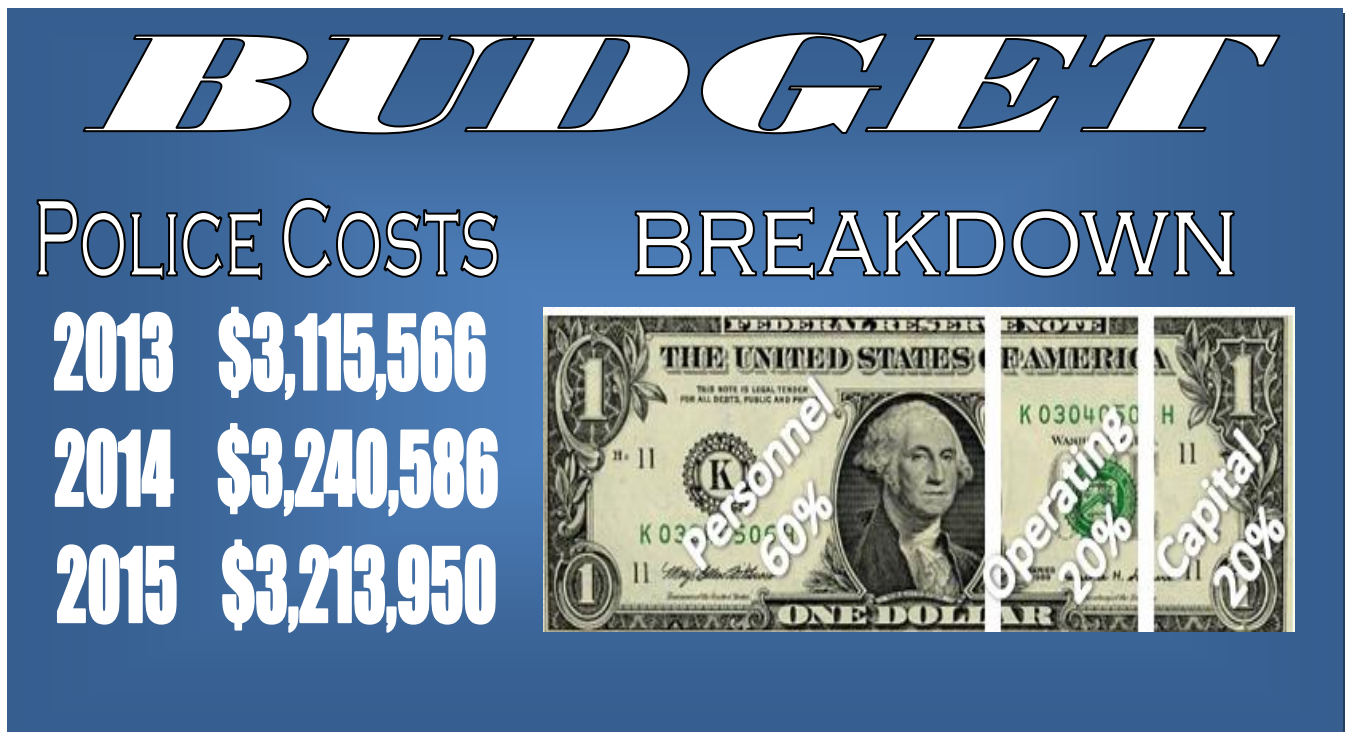
A large task of this division is budgeting and fiscal management. With the current state of economy and the need and demand for law enforcement services, this is no easy task. Through careful planning, the Town of Menasha Police Department has been able to maintain and in some instances increase the level of service all while maintaining a little to no impact on tax dollars.

As the info graphic below shows, the largest area of our budget is personnel. The

administrative division coordinates the management of personnel from recruitment to promotions and internal investigations.

We have been fortunate to continue to maintain staffing levels over the years, however we continue to look at the future with the anticipated growth that is projected to occur once the 441/41/10 interchange is completed.

The department is also looking towards the future with its current space needs. Our police department and town municipal complex was constructed in 1996 and the growth of the town over the past 20 years is starting to have its effect on space throughout the building.



# PATROL DIVISION

The patrol division is the backbone of the police department. This division is responsible for handling a majority of the many emergency and non-emergency calls received each year, along with enforcing traffic laws on the freeways and roadways throughout the Town of Menasha.

The Town of Menasha presently has 15 officers and 4 lieutenants that are assigned to this division. These officers are then split among 4 patrol shifts, each with a lieutenant, that provide coverage 24 hours a day, 7 days a week. At any given time there are between 3 and 5 officers working each shift, depending on the time of day.

Officers primarily conduct their patrols from police cars. The Town of Menasha utilizes six marked patrol vehicles. This has traditionally been the primary means of providing police services, but we have also initiated alternative patrol methods.

Our officers also get out of their patrol cars and will either patrol certain areas of the town on bicycle or foot. These efforts afford the officers the opportunity to interact more freely with the residents outside of the “confines” of a patrol car. Officers are also periodically assigned to a specialized directed patrol. This places officers in certain areas of the town due to a high call volume.

This past year proved to be quite a busy year for our patrol officers. In addition to responding to calls for service, our patrol officers enforce traffic laws on over 100 miles of town roads in addition to USH 10/441 and USH 41. This past year also saw the beginning of the construction of the STH 441 project which will provide some challenges for the next four years.

**7,236 calls investigated**

**3,841 traffic stops**

**337 accidents investigated**



# PATROL DIVISION



# CAR ACCIDENTS

## Top Location

Parking lots & Private Property  
Racine Rd./STH 441  
CTH II/USH 41  
Appleton Rd./STH 441  
CTH CB/USH 10



## Top Day/Time



## Top Causes



# INVESTIGATION DIVISION

Criminal investigations are an important aspect of the services that we provide. Each Town of Menasha police officer has received training to conduct thorough and complete investigations. Officers routinely conduct investigations and frequently resolve the issue with no additional assistance. Those investigations that require additional or technical assistance are forwarded to the Investigation Division.

The Town of Menasha Police Department Investigation Division consists of one lieutenant, two detectives, one MEG drug unit investigator and one community liaison officer. The Investigation Division is responsible for investigative follow-up and criminal case preparation related to the prosecution of persons suspected of committing crimes and arresting persons suspected of committing crimes.

The Investigation Division works closely with the Winnebago County District Attorney's Office, as well as many other agencies both

locally and nationally. Our investigators meet regularly with other Fox Valley agencies to share and obtain information regarding criminal activity in and around the Town of Menasha. The information shared at these meetings has proven invaluable and has directly resulted in crimes being solved not only here in the Town of Menasha but throughout the Fox Valley.

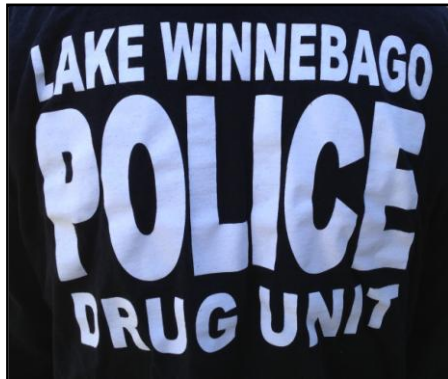
Many of the people arrested indicate that the reason for committing these property crimes is to support their drug habit. Major drug investigations in the Town of Menasha are conducted by the Lake Winnebago Area Metropolitan Enforcement Group (MEG). The MEG Unit consists of 13 officers from police and sheriff's departments in Winnebago, Outagamie, Calumet and Fond du Lac counties. The Town of Menasha has had several

officers assigned to this unit since it was formed in 1988.

***Two homicide cases with immediate arrests***

***90% arrest rate on violent crimes***

***Two drug trafficking organizations dismantled***

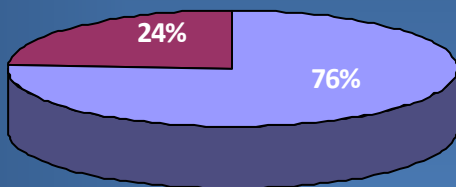


# INVESTIGATION DIVISION

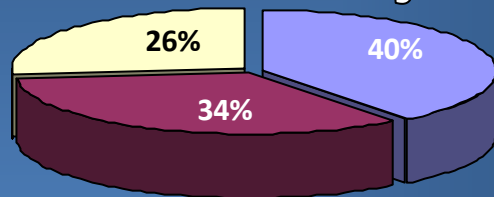


# BURGLARY

## Location Type

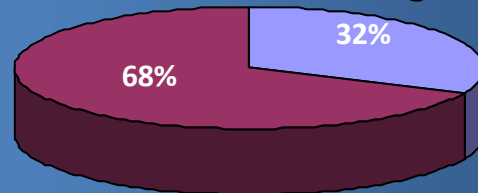


## Time of Day



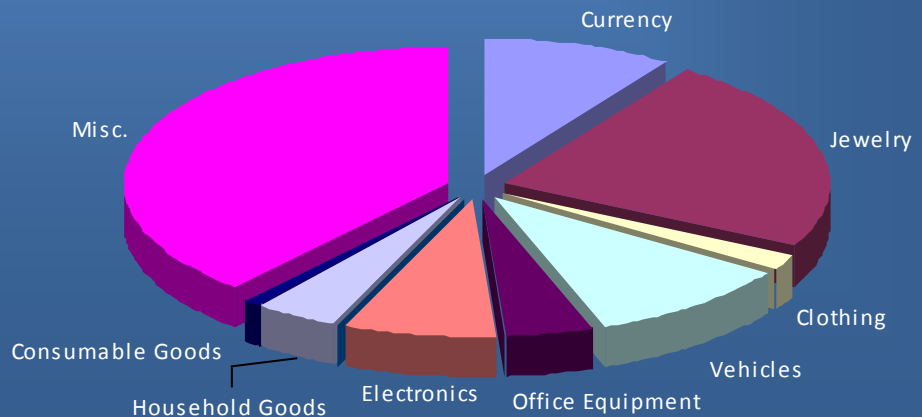
Interesting to note is how a majority involve no force and a few more occurred during the daytime rather than the stereotypical nighttime burglary!

## Mode of Entry



## Items Stolen

\$116,965 worth of property was reported stolen in 2014!



# COMMUNITY POLICING

Although a major function of the police department is responding to calls for service and investigating crimes that are committed, the Town of Menasha Police Department firmly believes in being actively involved in the community.

Last year our Community Liaison Officer gave 56 presentations on a variety of topics including visits to the students at Spring Road School, St. Mary High School, New Hope Christian School, Kinder Care and Summer Safety School.

In June we held our Summer Safety Night event. This event has been ongoing for the past 11 years and continues to grow each year! This past year over 1,000 people attended Summer Safety Night and we were treated to great weather along with a variety of activities. Department members also participated in the Town of Menasha Fire Department's Safety Day and several town business's picnics and safety fairs.

Through a grant from the National Association of Drug Diversion Investigators, we installed a drug disposal box in the police department

lobby in 2012. Since that time, we have collected over 1,000 pounds of unused medication!

In 2014 we continued our presence on the World Wide Web through our website which offers information on the department and many other resources. We also partner with RAIDSONLINE to offer a free crime mapping service whereby residents can see exactly what is occurring in their neighborhoods. We continue communications with the community through our Facebook site, Twitter account, Nixle text message alerts and YouTube channel. New for 2014 was a video podcast *Inside TMPD* which highlights activities at the police department.

The police department also works collaboratively with the following organizations: ***Crime Stoppers, PAST, Wisconsin Crime Prevention Practitioners Association, Wisconsin Association of Community Oriented Police, re:TH!NK, Special Olympics ,and the Wisconsin State TRIAD board.***

**56 public presentations**

**11 security surveys**

**32 nuisance abatement contacts**



# COMMUNITY POLICING



# POLICING

## NOT JUST ABOUT ENFORCEMENT!

Officers Swenson and Weinberger rescue a fawn trapped in a soccer net at Wittmann Park.



A resident captured Officer LaSage playing soccer with a group of boys after a call in the neighborhood.

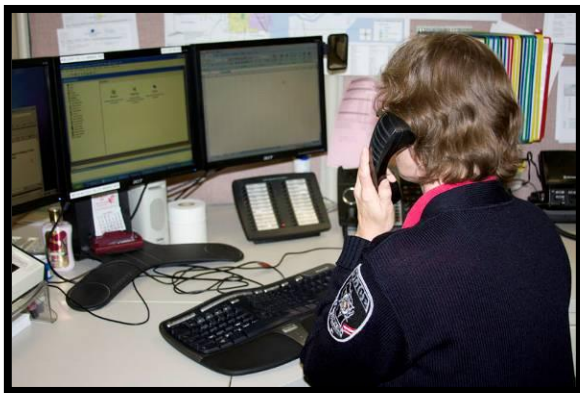
Lt. Cutler and Officers Boehlen and Farrell braving the Polar Plunge for Special Olympics!



# SUPPORT SERVICES

## COMMUNICATIONS AND RECORDS

The Town of Menasha Police Department's Communication and Records Division serves the citizens in a variety of ways. This division is open to the public 24 hours a day, 365 days a year. This division is generally the first point of contact the public has with the police department. Communication Technicians are those employees who receive the public's phone calls and greet those that come into the lobby.



In addition to serving the citizens of the Town of Menasha, the Communications and Records Division provides support to our sworn personnel. The division monitors cameras placed in and around the municipal complex, and routinely provides searches of Federal, State, and local databases to assist officers with locating information that is pertinent to their cases and investigations.

The Communications and Records Division is responsible for maintaining the information that is entered into these systems. Information is entered into local, State, and Federal

databases, and must be done so in accordance with various laws and system regulations. These entries include missing persons, stolen and recovered articles and vehicles, and arrest warrants. In order to ensure a high standard of accuracy, routine audits are conducted on these systems.

The Communications and Records Division is also responsible for typing all of the officers' dictated reports. Any incident that involves an officer's response and investigation typically will require that officer to dictate a report. These reports are then filed electronically and any attachments are filed in cabinets.

## EMERGENCY DISPATCH

The Winnebago County Sheriff's Department is responsible for answering 911 emergency calls and dispatching emergency services throughout Winnebago County. The 911 Communications Center is located on the second floor of the Sheriff's Office. The 911 Communications Center is staffed 24 hours a day, 365 days a year. There are three shifts per day with five or six dispatchers on duty each shift.





# SUPPORT SERVICES

## TRAINING

The State of Wisconsin requires that sworn officers attend a minimum of 24 hours of training annually to maintain their law enforcement certification. ***Our officers attended over 1,200 hours of training in 2014. This averages to nearly 47 hours of training for each officer.***

This training included firearms qualification-which occurs twice a year, along with annual legal updates on new laws and court rulings. Officers also attended a variety of specialized training such as: Problem Oriented Policing, Search and Canvass, Homicide Investigations, and Active Shooter Response.

The police department continued to be a leader in law enforcement training in Wisconsin as we were a host agency for several missing child investigation seminars here in the town. Collectively, these conferences were attended by 300 officers from across Wisconsin.

## SWAT

The Town of Menasha Police Department has partnered with the City of Appleton Police Department for over 20 years to provide assistance for any tactical situations in our community. We have two officers that are assigned to the Appleton SWAT team along with one officer assigned as a negotiator.

## HONOR GUARD

In 2010, the department formed an honor guard to represent not only the police department, but the community at formal events both here in the Town of Menasha and around the state. The unit is comprised of one lieutenant and five patrol officers.

In 2014 the honor guard attended several events such as the annual town meeting, Wisconsin Law Enforcement Memorial Ceremony and funerals for fallen officers in the area.



---

# CRIME TREND REPORT



*The following section presents a statistical overview of the past year and also compares those numbers over a three year period.*

# STATISTICS – CALLS FOR SERVICE

## ACTIVITY REPORT - 2012-2014

Incident Type	2014	2013	2012
Complaints	3,524	3,550	3,863
Services & Assists	3,712	3,331	3,119
Traffic Stops	3,841	4,520	4,485
<b>Total</b>	<b>11,077</b>	<b>11,401</b>	<b>11,467</b>

## CALLS FOR SERVICE – MONTHLY BREAKDOWN

Incident Type	Jan	Feb	Mar	April	May	June	July	Aug	Sept	Oct	Nov	Dec
Complaints	249	231	270	269	334	310	293	321	291	277	230	226
Services & Assists	304	264	180	540	154	160	323	321	296	314	276	290
Traffic Stops	257	329	408	307	357	440	321	278	382	302	244	216
Accidents	39	24	28	16	19	22	24	21	24	24	38	13
<b>Total</b>	<b>849</b>	<b>848</b>	<b>886</b>	<b>1132</b>	<b>864</b>	<b>932</b>	<b>961</b>	<b>941</b>	<b>993</b>	<b>917</b>	<b>788</b>	<b>745</b>

The charts above compare the total police activity for 2012 – 2014 as well as monthly for 2014.

- **Complaints** indicate the number of police reports and investigations done by officers.
- **Services & Assists** indicate the number of times officers have assisted citizens, motorists, other agencies, etc. Many times these incidents do not generate a police report.
- **Traffic Stops** indicates the number of times officers stop a vehicle for a traffic violation. These may result in a citation(s) or warning(s) being issued.
- **Accidents** are those reported to the police department occurring either on roadways, parking lots and/or private property.

# STATISTICS – CALLS FOR SERVICE

## CALLS FOR SERVICE BREAKDOWN

Incident Type	2014	2013	2012
Abandoned Vehicles	23	26	17
Alarm	131	118	112
Animal	167	217	248
Civil	32	30	24
Emergency Committal	42	53	47
Damage to Property	63	90	204
Death	16	20	10
Disturbance	184	215	242
Domestic Disturbance	113	77	79
Drugs	82	70	62
Fraud	29	37	28
Harassment	92	80	124
Junked Vehicles	76	52	46
Juvenile	163	156	152
Lost/Found Property	75	78	100
Missing Person	4	1	3
Noise	88	103	135
Open Door	70	57	37
Public Nuisance	22	20	33
Runaway	26	13	18
Sex Offenses	7	8	14
Suspicious Inc/Veh./Person	125	176	192
Trespass	25	21	23
Warrant Arrests	138	138	125
Weapon	2	5	7
Welfare Check	193	167	163

The chart above is a breakdown of some of the types of complaints officers have investigated. Certain crimes (theft, burglary, robbery, assault, etc) are compared on the next page.

# STATISTICS – CRIMES AND ARRESTS

## Town of Menasha Unified Crime Report of Index Offenses

	2014	2013	2012
<b>Violent Crime</b>			
<b>Murder</b>	2	0	0
<b>Forcible Rape</b>	2	2	2
<b>Robbery</b>	2	1	2
<b>Assault (Simple/Aggravated)</b>	34	35	52
<b>Total Violent</b>	<b>40</b>	<b>38</b>	<b>56</b>
<b>Clearance Rate</b>	<b>90%</b>	<b>79%</b>	<b>86%</b>
<b>Property Crime</b>			
<b>Burglary</b>	40	32	52
<b>Theft</b>	137	151	201
<b>Motor Vehicle Theft</b>	4	7	10
<b>Arson</b>	0	0	1
<b>Total Property</b>	<b>181</b>	<b>190</b>	<b>264</b>
<b>Clearance Rate</b>	<b>31%</b>	<b>27%</b>	<b>33%</b>
<b>Total Index</b>	<b>221</b>	<b>228</b>	<b>320</b>

The Federal Bureau of Investigation's Uniform Crime Reporting (UCR) Program, which began in 1929, collects information on the following crimes reported to law enforcement: homicide, forcible rape, robbery, aggravated assault, burglary, theft, motor vehicle theft, and arson.

The UCR Program also maintains a database of arrests and clearance rates of law enforcement agencies. Clearance rates reflect the percentage of those cases that are cleared or solved.

**The United States clearance rates for 2013 were: 48% for violent crimes and 18% for property crimes.**

## ARREST REPORT

	2014	2013	2012
<b>Prosecution Requests</b>	210	193	259
<b>Juvenile Referrals</b>	66	41	48
<b>Town Summons</b>	339	357	403
<b>TOTAL</b>	<b>615</b>	<b>591</b>	<b>710</b>

This chart outlines the types of arrests made by officers.

- **Prosecution requests and juvenile referrals** are requests to the district attorney's office for state charges.
- **Town summonses** are local ordinance violations.

# STATISTICS – TRAFFIC ENFORCEMENT

## TRAFFIC CITATIONS

	2014	2013	2012
Speeding citations	690	725	700
Non-speeding citations	1,847	2,252	2,130
Parking citations	1,000	926	692
OWI	109	109	122
<b>Total</b>	<b>3,646</b>	<b>4,012</b>	<b>3,644</b>

## TRAFFIC WARNINGS

	2014	2013	2012
Speeding warnings	1,464	1,489	1,401
Non-speeding warnings	986	1,332	1,025
Vehicle defect warnings	764	810	933
<b>Total</b>	<b>3,214</b>	<b>3,631</b>	<b>3,359</b>

## ACCIDENTS

	2014	2013	2012
Accidents Investigated	337	290	273

The top two charts show the amount of traffic enforcement in the Town of Menasha. It compares the number of citations to the number of warnings issued by officers.

The bottom charts shows the breakdown of the traffic accidents reported.

# CRIME – HOW DO WE COMPARE

The Town of Menasha continues to be one of the safest cities in Wisconsin and the Fox Valley. The Town of Menasha experienced a crime rate of only 12 crimes per 1,000 people in 2013.

However, crimes still occur, even in the safest of cities. The table below refers to crime rates rather than raw numbers. The reason for this is that crime rates are used in order to remove the effect of differing population bases among communities. Using rates per 1,000 residents allows analysis to be conducted across an equalized population base here in the Fox Valley.



*Note that these are 2013 numbers as the Wisconsin Department of Justice has not completed their 2014 statistics at the time of publication.*

<b>Community</b>	<b>Violent Rate per 1,000</b>	<b>Property Rate per 1,000</b>
<b>Wisconsin</b>	2.68	21.63
<b>Town of Menasha</b>	1.51	10.24
<b>City of Menasha</b>	1.76	24.14
<b>Neenah</b>	1.55	19.61
<b>Appleton</b>	2.32	18.09
<b>Fox Valley Metro</b>	0.59	9.08
<b>Grand Chute</b>	1.06	36.96
<b>Kaukauna</b>	1.20	10.72

*Statistics courtesy of the Wisconsin Department of Justice*

## **PHOTOS IN THIS REPORT ARE COURTESY OF:**

Post-Crescent Media  
Images by Hawkeye  
Town of Menasha Park and Recreation  
Town of Menasha Police Department  
Weston Imaging Group LL